

Leman Street, E1

£500,000

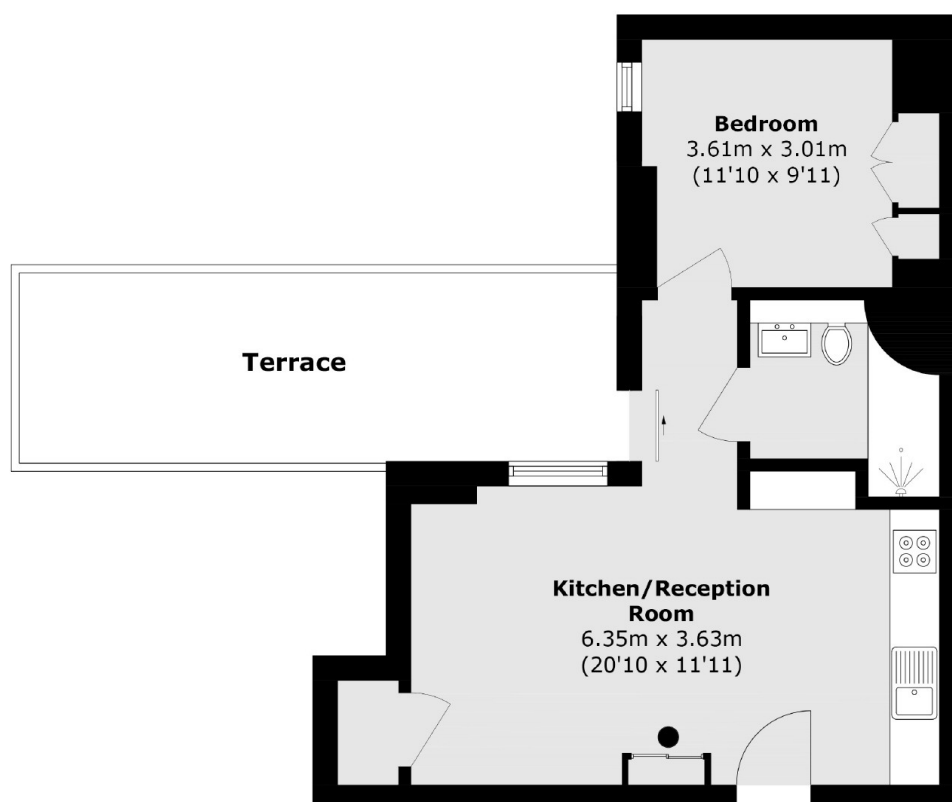
A one bedroom apartment located within the Sugar House development. The property has a large open plan reception/kitchen with storage cupboard, a generous double bedroom and a private terrace. The property benefits from high ceilings, wooden flooring and use of a 24 hr concierge.

Sugar House has direct access to a picturesque landscape garden and is close to Brick Lane, Spitalfields market and Tower Hill, which all great transport links throughout London.

Features

- One Bedroom
- Secure Development
- Open Plan Kitchen
- Outdoor Space
- 24 Hour Concierge
- High Ceilings

Leman Street, London, E1



Total area (approx.): 43.9 sq. m (472.5sq. ft)

Terrace area (approx.): 16.7 sq. m (179.7 sq. ft)