



East Mount Street, E1

£275,000

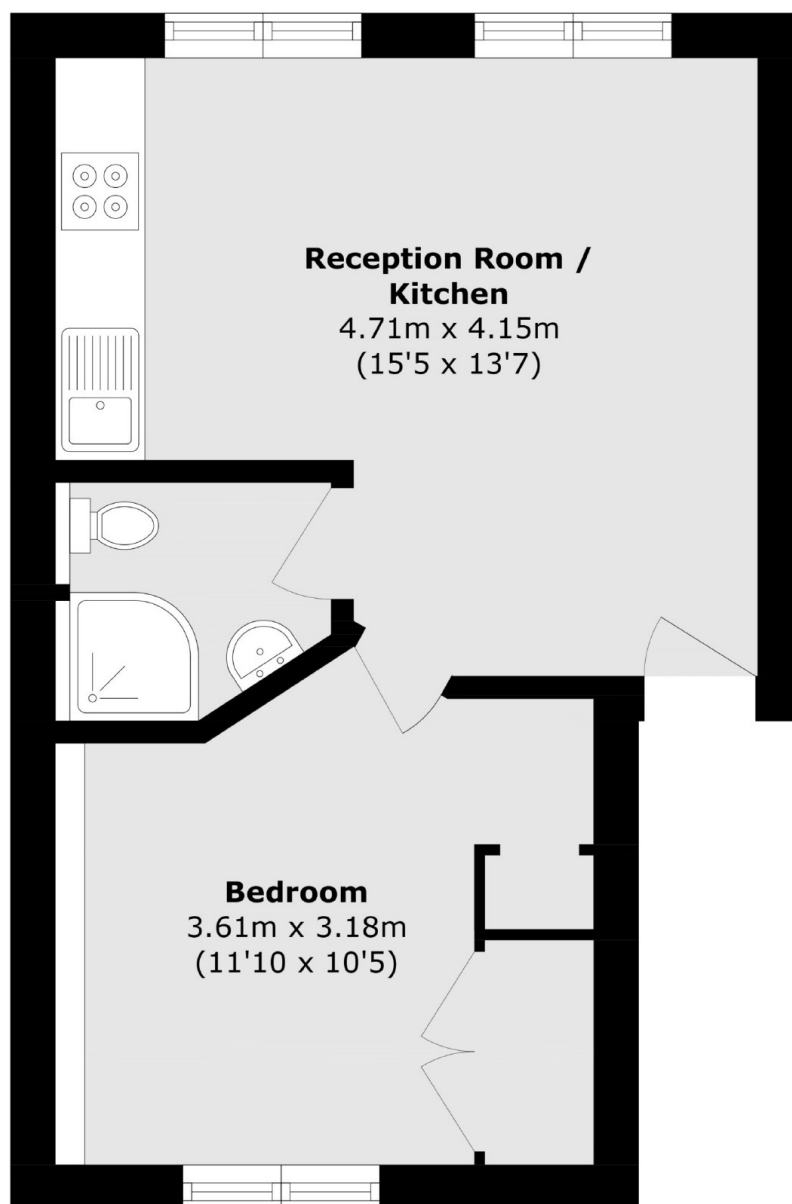
A bright, one double bedroom flat located on the top floor of a Victorian conversion. This property offers an open plan kitchen/living with wooden flooring, a good-sized double bedroom with plenty of built-in storage and a family bathroom.

This property is located a short distance from the green spaces at Victoria Park. The location means you are in close proximity to numerous tube lines such as Whitechapel (Elizabeth Line, Hammersmith & City) and Bethnal Green (Central and Windrush Line). Whitechapel offers an array of amenities such as the Genesis Cinema, Anchor Retail Park, not to mention the many cafe's, restaurants and local pubs.

Features

- One Double Bedroom
- Victorian
- Open Plan
- Opposite Whitechapel Station
- No Onward Chain
- Additional Storage

East Mount Street, London, E1



Total area (approx.): 31.8 sq. m (342.2 sq. ft)