



## Quaker Street, E1

£850,000

Set within a modern development in a sought after location this two bedroom, two bathroom split level apartment offers a recently refurbished contemporary living style throughout. The entry level of the apartment offers a fully integrated kitchen with adjoining dining area and the two double bedrooms, one of which is en-suite.

Set on the extremely sought after Quaker Street, this apartment is located in the heart of Shoreditch and within a quarter of a mile of Old Spitalfields market which provides a selection of restaurants, cafés and bars. The property is a short walk from Shoreditch High Street Station (Windrush), Old Street Station (Northern Line) and Liverpool Street Station (Elizabeth Line).

### Features

- Two double bedrooms
- Two bathrooms
- Recently Refurbished
- Split Level Apartment
- Private Terrace
- Far Reaching City Views



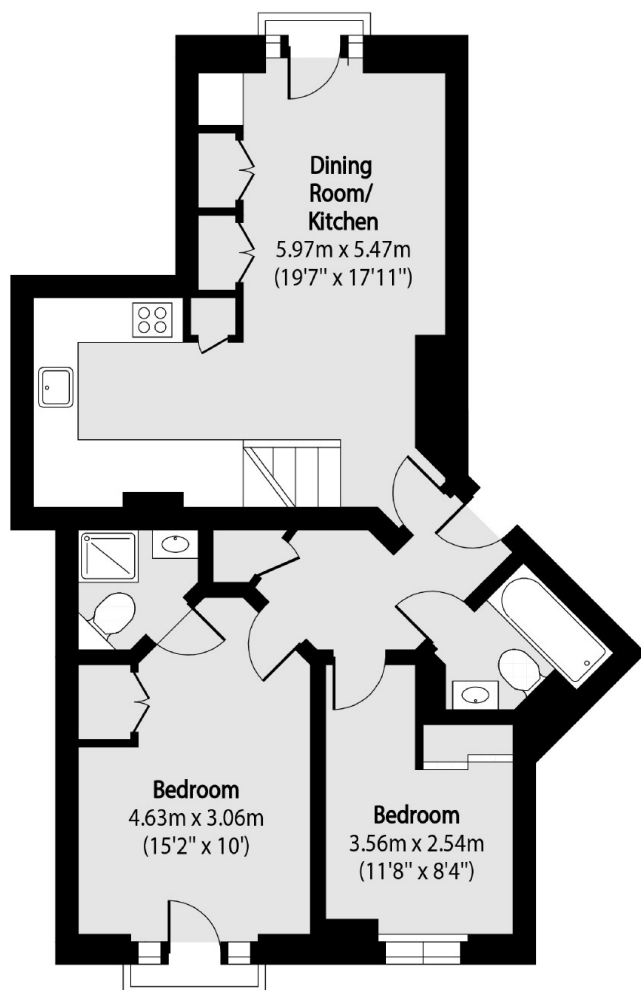
## Quaker Street, E1

The second level provides a large reception area which benefits from a great deal of natural light from the floor to ceiling windows. This area leads out onto the private terrace with far reaching city views.

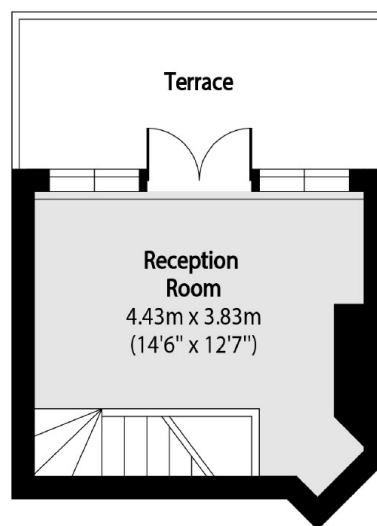




# Quaker Street, London, E1



Second Floor



Third Floor

Total area (approx): 75.36 sq m (811 sq. ft)

Terrace total area (approx): 9.60 sq m (103 sq. ft)

## Dexters

Shoreditch  
44 Great Eastern Street  
London  
EC2A 3EP  
Sales  
0207 483 6371

Energy Rating: C. We aim to make our particulars both accurate and reliable. However they are not guaranteed; nor do they form part of an offer or contract. If you require clarification on any points then please contact us, especially if you're traveling some distance to view. Please note that appliances and heating systems have not been tested and therefore no warranties can be given as to their good working order.

 **RICS** | Regulated  
Estate Agent  
and Letting Agent

dexters.co.uk