



Folgate Street, E1

£730,000

A modern two-bedroom, two-bathroom apartment on the third floor. This apartment offers a large living room, a separate kitchen with built in appliances, a private balcony, two double bedrooms, one with an en-suite bathroom, and a modern family bathroom.

Folgate Street is a cobbled stoned street located on the edge of Spitalfields Market. The location offers a of fashionable shops, bars, restaurants, entertainment and transport links in Brick Lane, Liverpool Street and Shoreditch.

Features

- Two Double Bedrooms
- En Suite
- Private Balcony
- Underground Parking
- Spitalfields Market
- Chain Free

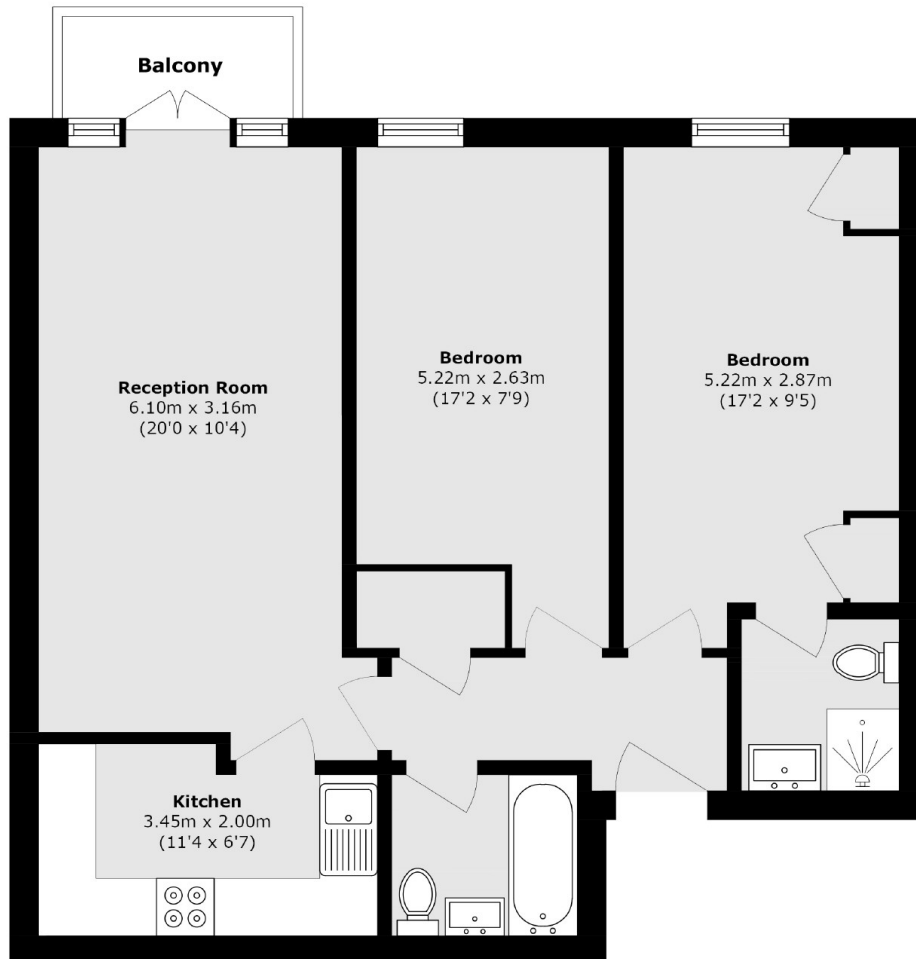


Folgate Street, E1

This property offers plenty of built-in storage, and wooden floors throughout. The development also benefits from concierge, gym access, off-street parking and a communal garden.



Folgate Street, London, E1



Total area (approx.): 68.5 sq. m (737.3 sq. ft)

Balcony area (approx.): 2.5 sq. m (26.9 sq. ft)