



Wilmot Street, E2

£325,000

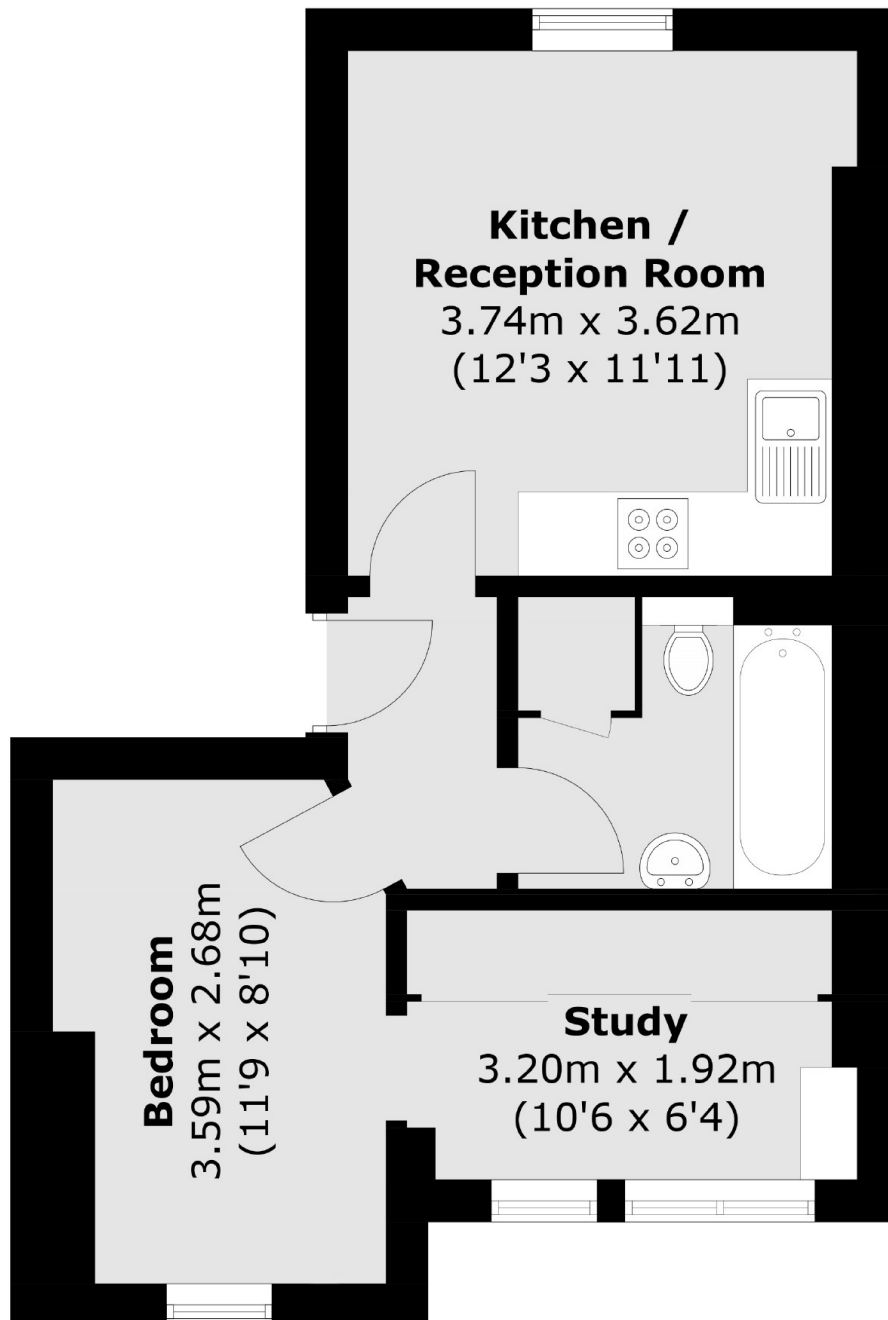
A one bedroom apartment situated on the fourth floor of a secure period block on Wilmot Street boasting well-proportioned accommodation throughout and a desirable Bethnal Green location. The apartment offers an open plan living room with a fully integrated kitchen, views onto the sought after tree lined street and a large double bedroom with adjoining walk in wardrobe/study and additional views of Weavers Fields. The entire apartment benefits from a strong amount of natural light from its elevated position.

The property is situated moments from a range of shops and amenities that can be found on Bethnal Green Road and the further range of bars and eateries of Shoreditch are only a short walk away while Bethnal Green overground and underground stations are also within close proximity for links around the city.

Features

- One Bedroom Apartment
- Integrated Kitchen
- Views Over Weavers Fields
- Sought After Location
- Walk in Wardrobe
- Natural Light Throughout

Wilmot Street,
London, E2



Total area (approx.): 37.0 sq. m (398.3 sq. ft)

Dexters

Shoreditch
44 Great Eastern Street
London
EC2A 3EP
Sales
0207 483 6371

Energy Rating: E. We aim to make our particulars both accurate and reliable. However they are not guaranteed; nor do they form part of an offer or contract. If you require clarification on any points then please contact us, especially if you're traveling some distance to view. Please note that appliances and heating systems have not been tested and therefore no warranties can be given as to their good working order.

 **RICS** | Regulated
Estate Agent
and Letting Agent

dexters.co.uk