

Long Street, E2

£625 Per week

An ultra modern apartment located on the floor of the Long & Waterson Street development. This one bedroom property has an open plan living room and kitchen, main bedroom and main bathroom.

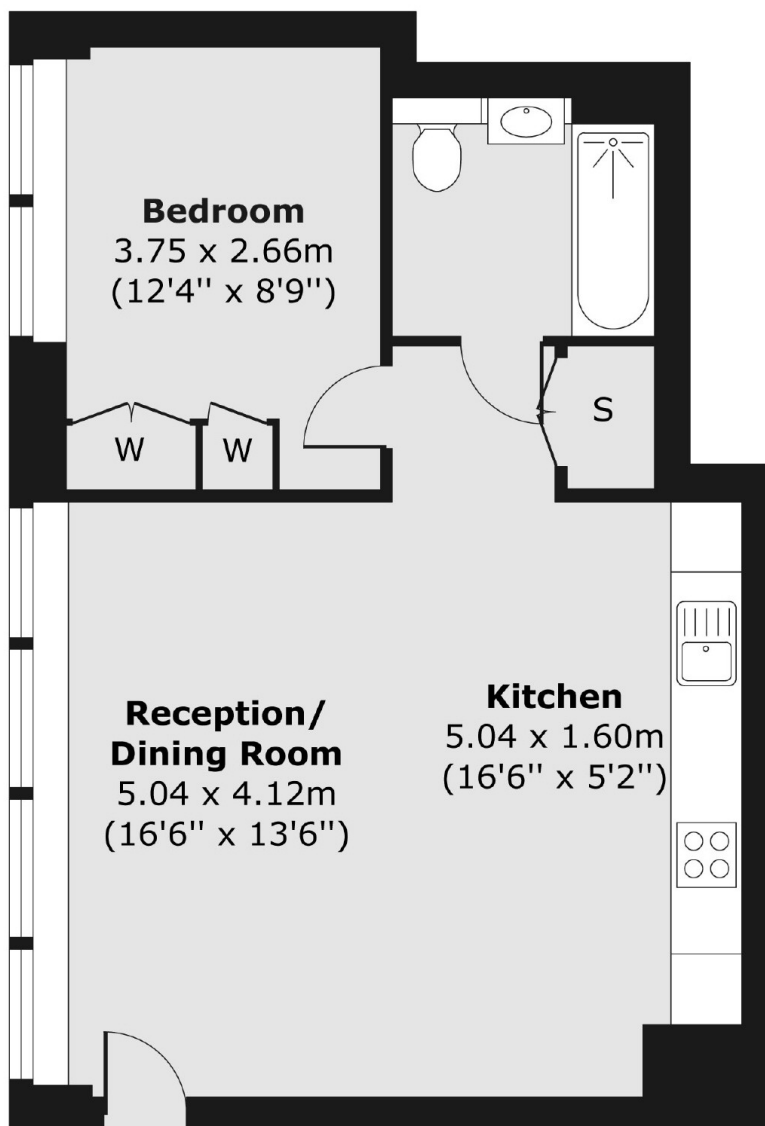
Waterson Building is located in the heart of Shoreditch which has good access to both Old Street, Liverpool Street and Shoreditch. There are a great choice of bars, cafes and restaurants in the area.

Features

- Fourth Floor
- One Bedroom
- 24 Hour Concierge
- Gym
- Furnished
- Gated Development

Long Street,
London, E2

Fourth Floor



Total area (approx.) 48.51 sq. m (522 sq. ft)