

## Commercial Road, E1

### £525,000

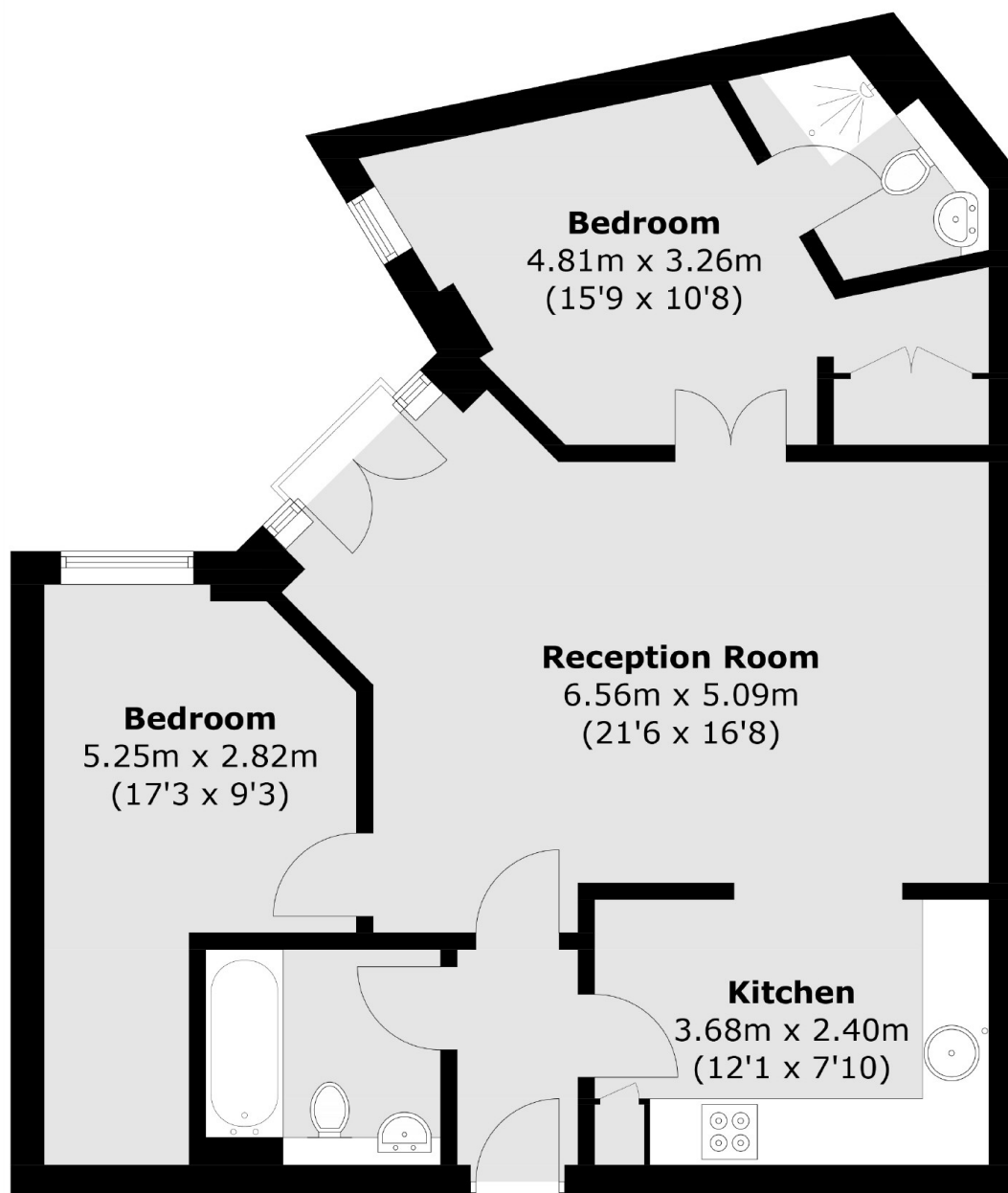
A two bedroom, two bathroom apartment situated on the fifth floor of a secure building with concierge and includes parking. The property comprises of an open plan kitchen/reception room, a principal bedroom with en-suite, second double bedroom and a family bathroom.

The apartment is ideally located on Commercial Road within easy reach of the City's Square Mile, St. Katherine's Dock, and Brick Lane, Spitalfields and Shoreditch. Both Aldgate East and Aldgate Stations Underground stations are within walking distance, whilst both Whitechapel and Liverpool Street stations are also within close proximity.

### Features

- Two Bedroom
- Two Bathroom
- Concierge
- Gym
- Secure Car Parking
- Communal Roof Terrace

# Commercial Road, London, E1



Total area (approx.): 68.6 sq. m (738.4 sq. ft)

## Dexters

Shoreditch  
44 Great Eastern Street  
London  
EC2A 3EP  
Sales  
0207 483 6371

Energy Rating: C. We aim to make our particulars both accurate and reliable. However they are not guaranteed; nor do they form part of an offer or contract. If you require clarification on any points then please contact us, especially if you're traveling some distance to view. Please note that appliances and heating systems have not been tested and therefore no warranties can be given as to their good working order.

 **RICS** | Regulated  
Estate Agent  
and Letting Agent

[dexters.co.uk](https://www.dexters.co.uk)