



Drysdale Street, N1

£3,400 Per calendar month

Dexters



Drysdale Street, N1

A modern two bedroom two bathroom apartment located in Timber Yard. This apartment which is located in a secure development has a semi open plan reception and kitchen area, two double bedrooms and is available furnished.

A modern two bedroom two bathroom apartment located in Timber Yard. This apartment which is located in a secure development has a semi open plan reception and kitchen area, two double bedrooms and is available furnished.

Located a very short distance to Hoxton Square this apartment is in the heart of Shoreditch/Old Street with a host of bars, cafes and restaurants.

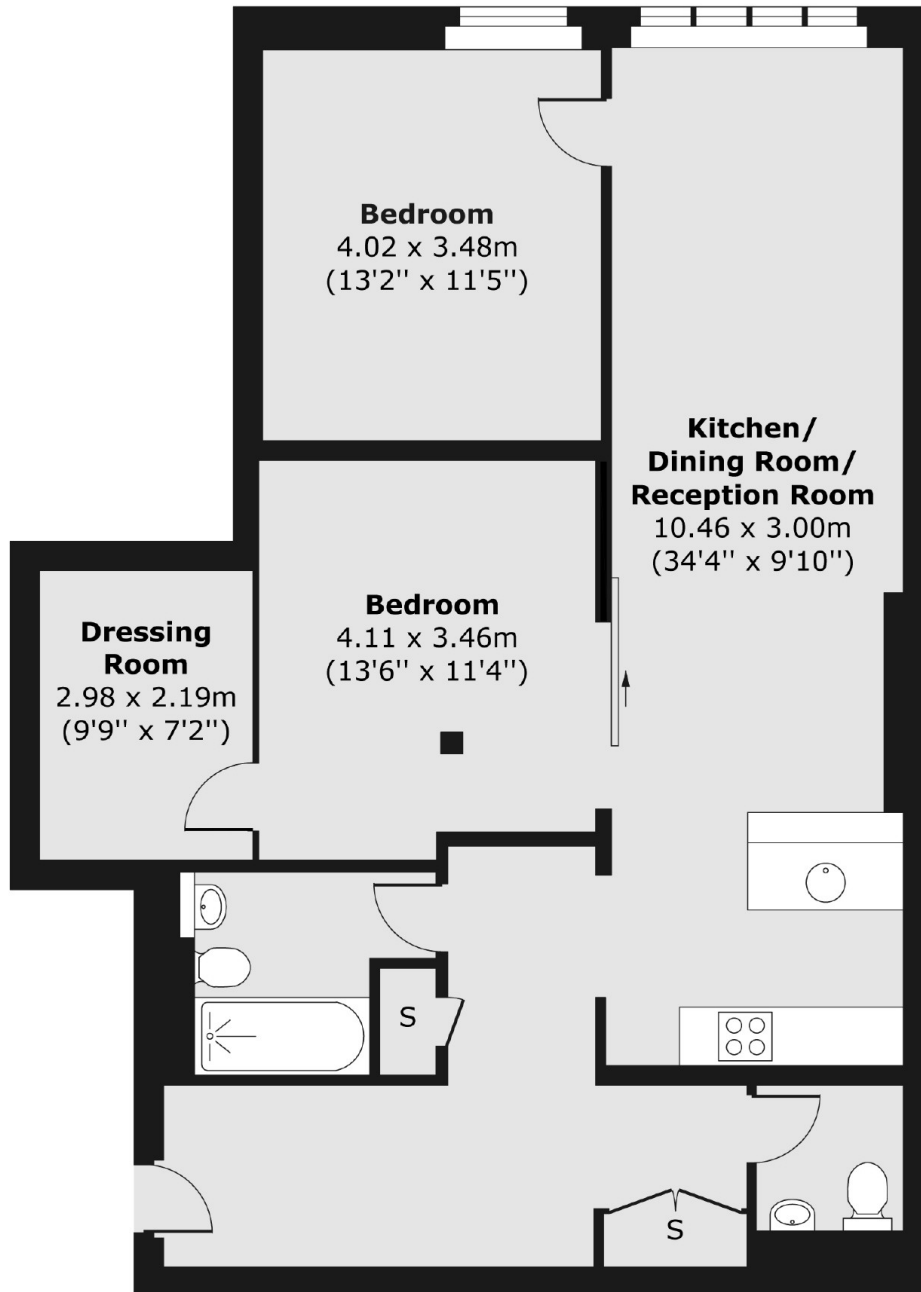
Features

- Modern
- Two Double Bedroom
- Two Bathroom
- Furnished
- Secure Entry
- Great Location



Drysdale Street, London, N1

Third Floor



Total area (approx.) 93.35 sq. m (1,005 sq. ft)