



Lamb's Passage, EC1Y
£725,000

Dexters



Lamb's Passage, EC1Y

A well-presented two-bedroom, two-bathroom apartment with a modern, open-plan, kitchen/living room. The building benefits from a porter and has recently had its exterior cladding replaced.

Lambs Passage is a quiet street and is conveniently located for easy access to a variety of entertainment and restaurants as well as local street food markets such as Whitecross Street. Residents can also enjoy the local Barbican Centre where you will find a theatre and cinema. The apartment is between Old Street, Moorgate, Barbican and Farringdon stations providing access to multiple tube lines, including Elizabeth Line to Heathrow, Northern Line, Hammersmith and City, plus national rail service to Gatwick and Luton Airports.

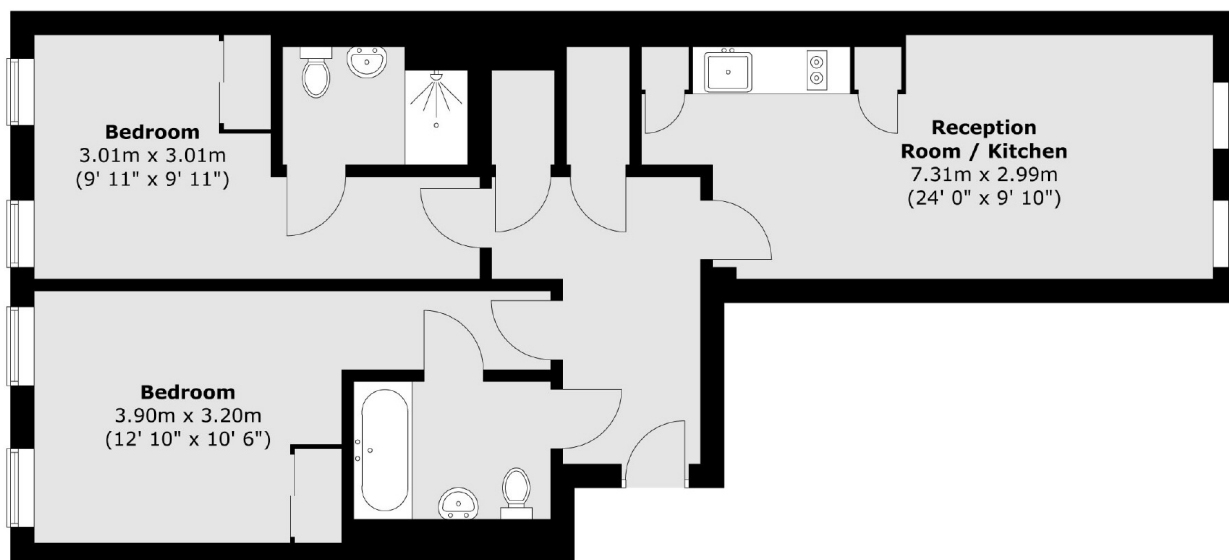
Features

- Two Double Bedrooms
- Two Bathrooms
- Wood Floors
- Modern Finish
- First Floor with Porter
- Central Location



Lamb's Passage, London, EC1Y

First Floor



Total area (approx.) : 72.9 sq. m (785 sq. ft)