



## East Arbour Street, E1

### £700,000

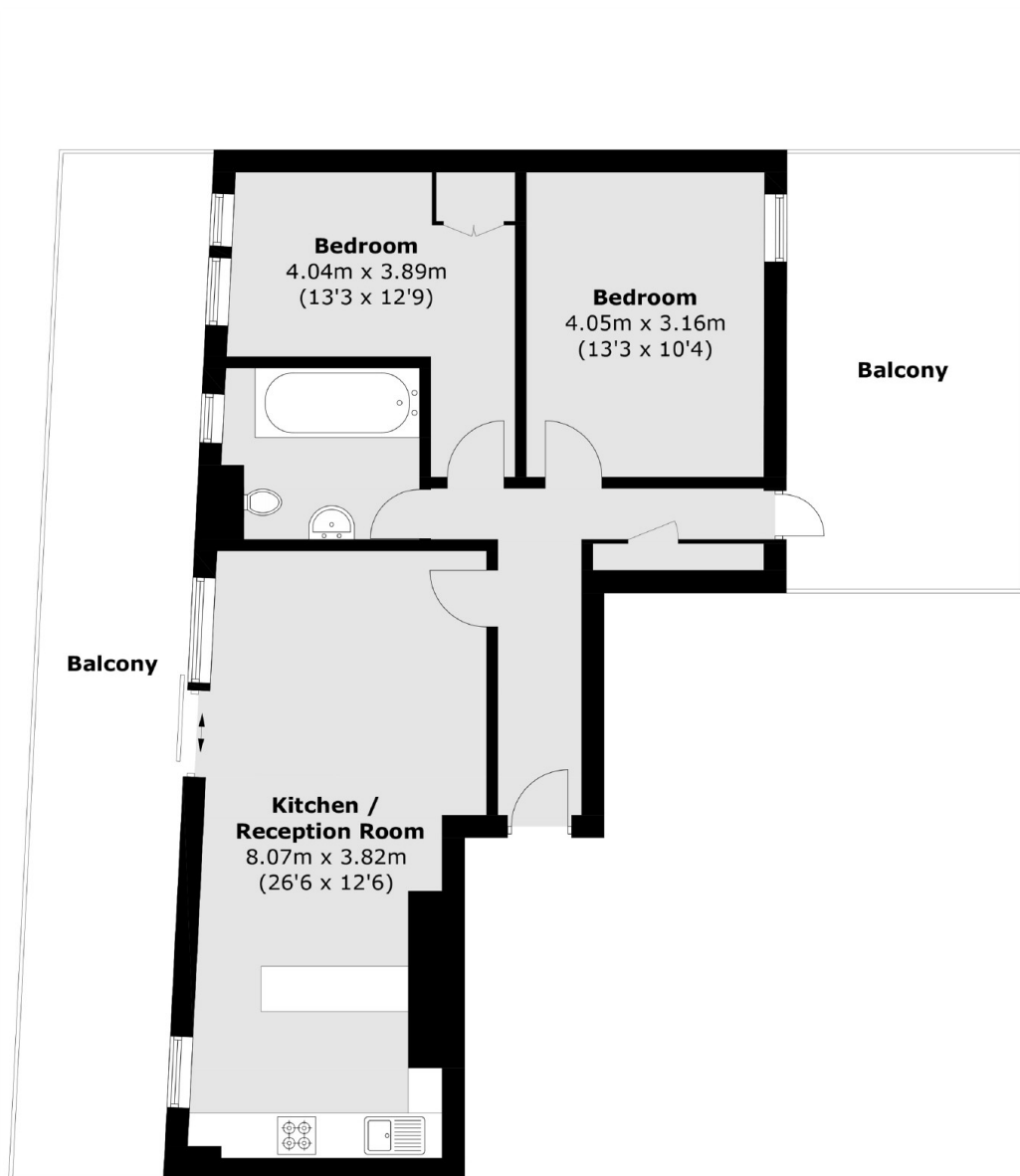
This large, two-bedroom conversion, located in the Old Court House development which was originally built in the 1860 as a magistrates' court offers an open-plan living area with a fully integrated contemporary kitchen, two double bedrooms, two sizable private balconies, and a modern family bathroom. The property also benefits from being dual aspect with West and East facing views.

East Arbour Street is located just over half a mile from Whitechapel Station providing access to the Elizabeth Line with links to the City and Heathrow Airport. Limehouse DLR Station is also half a mile away providing links to Canary Wharf and The City. The Royal London hospital is close by as well as all the shops that Commercial Road has to offer.

### Features

- Penthouse Level
- Two Balconies
- Dual Aspect
- City Views
- Two Bedrooms
- Open Plan

# East Arbour Street, London, E1



Total area (approx.): 69.1 sq. m (743.8 sq. ft)  
Balcony area: 45.2 sq. m (486.5 sq. ft)