



Martineau Square, E1

£350,000

Modern city living in this well presented one-bedroom apartment on the 5th floor, easily accessible by lift. Offering lovely views of London's skyline from its private balcony, this property offers a blend of comfort and convenience ideal for professionals. Recently updated with modern décor and new carpets. A spacious hallway with a storage room welcomes you into this well-designed home. Convenience for everyday use.

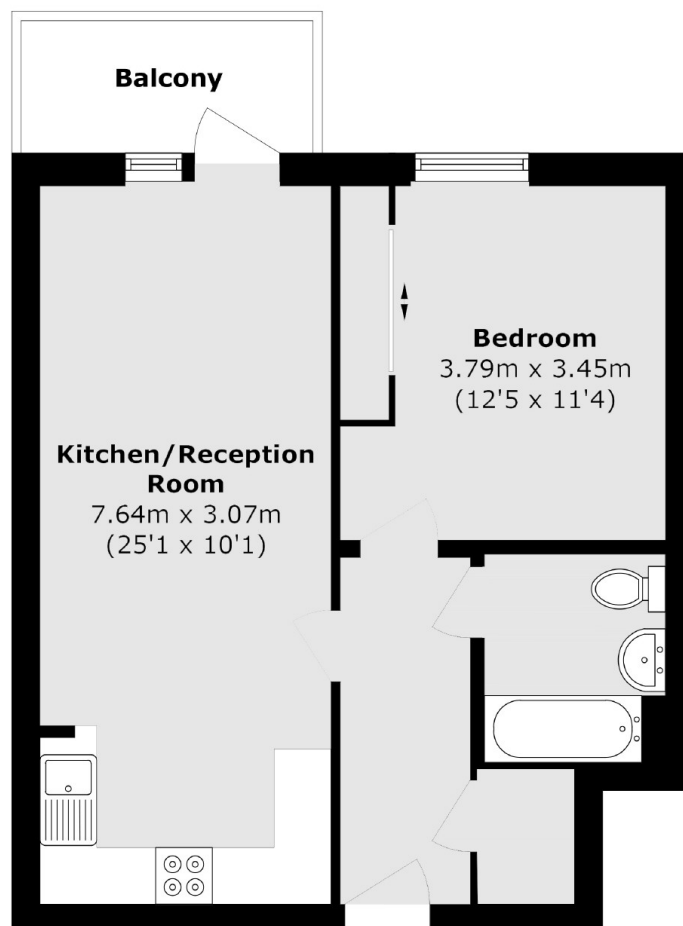
The open-plan reception/kitchen is fully integrated, the bright living area, enhanced by floor-to-ceiling windows, opens onto a private balcony perfect for relaxing or entertaining while enjoying captivating City views. The generously sized bedroom comfortably accommodates a king-size bed and features built-in wardrobes for ample storage. The bathroom combines modern design and practicality with a bathtub and shower screen, ensuring convenience for everyday use.

Set in a quiet area overlooking a park and no-through road, this home is moments from iconic landmarks like Tower Bridge or St Katharine Docks' and vibrant restaurants and bars of Shoreditch. Enjoy riverside strolls along the Thames or explore nearby cultural hotspots like Wilton's Music Hall. Local supermarkets are just steps away. For professionals working in Central London or Canary Wharf, this location is hard to beat. Several tube stations are just an 8-15 minute walk away, including Tower Hill, Shadwell, Aldgate East, Aldgate and

Features

- Chain Free
- Private Balcony
- Secure Building
- Recently redecorated
- Spacious Bedroom

Martineau Square, London, E1



Total area (approx.): 48.9 sq. m (526.3 sq. ft)

Balcony area (approx.): 4.3 sq. m (46.2 sq. ft)