



Old Castle Street, E1

£350,000

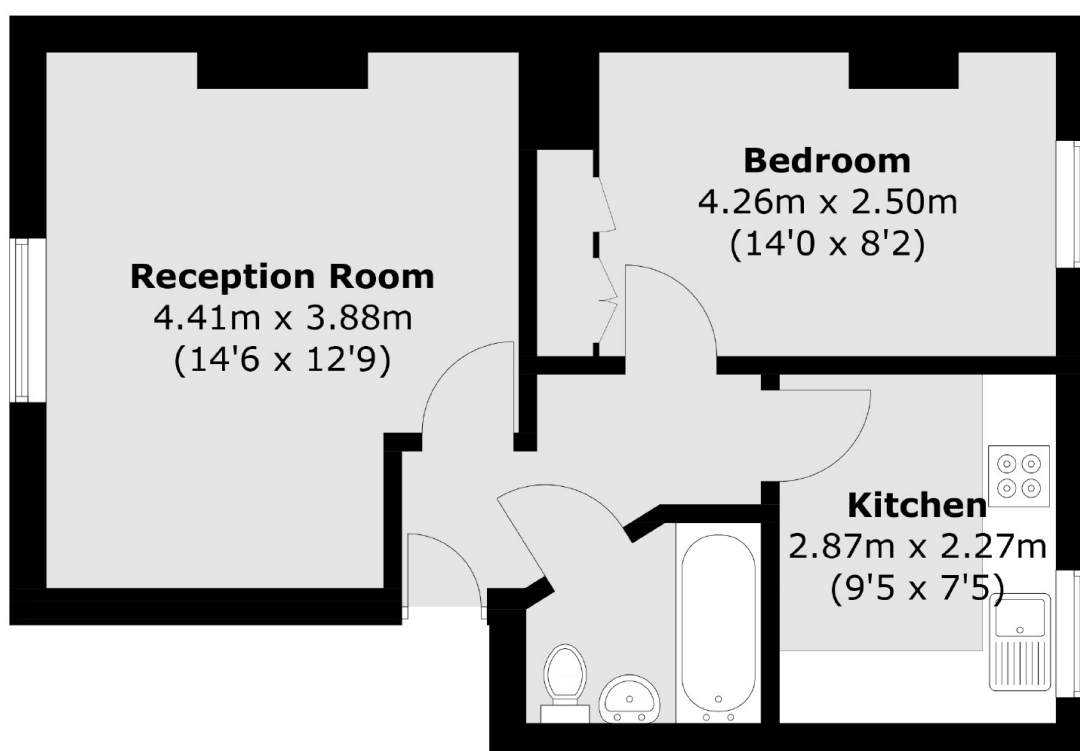
A well-presented one double bedroom apartment. This property comprises of a spacious reception room with dining area, a separate kitchen, a large double bedroom and a contemporary bathroom suite. Located in a very popular development with a shared courtyard in a quiet street with easy access to local transport links and amenities.

A well-presented one double-bedroom apartment. This property comprises a spacious reception room with a dining area, a separate kitchen, a large double bedroom and a contemporary bathroom suite. Located in a very popular development with a shared courtyard in a quiet street with easy access to local transport links and amenities.

Features

- One Double Bedroom
- Dual Aspect
- Communal Garden
- Recent Lease Extension
- Good Transport Links
- City Views

Old Castle Street, London, E1



Total area (approx.): 41.5 sq. m (446.7 sq. ft)