



## Gathorne Street, E2

### £800,000

A two bedroom apartment set within an architecturally appealing and secure school conversion. This apartment offers modern living arranged over three floors filled with sashed windows allowing for exceptional natural light. The entry level to the property gives access to the large principal bedroom, with fitted storage and family bathroom.

This remarkable property gives the rare combination of space, character, and modern living in one of London's most sought-after locations. Ideally located, you're just moments from the peaceful Regent's Canal and the open green spaces of Victoria Park, as well as the vibrant local amenities and excellent transport links of Bethnal Green.

### Features

- Large Two Bedroom
- Arranged Over Three Floors
- School Conversion
- Secure Development with Gated Parking
- Double Height Ceilings





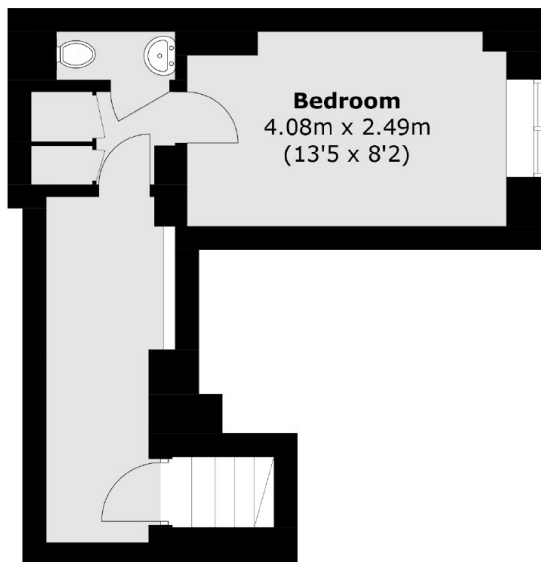
## Gathorne Street, E2

The first floor is home to the open living space which benefits from double height ceilings as well as the semi-separate fully integrated kitchen and separate utility room. The second and final floor offers a semi mezzanine style fitting with the properties character, perfect for storage or a home office and leads into the generous separate second bedroom and WC.

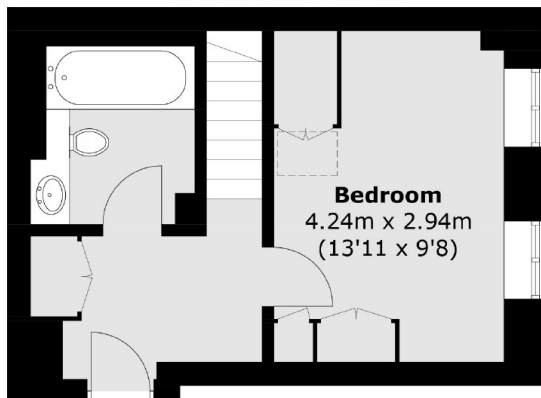




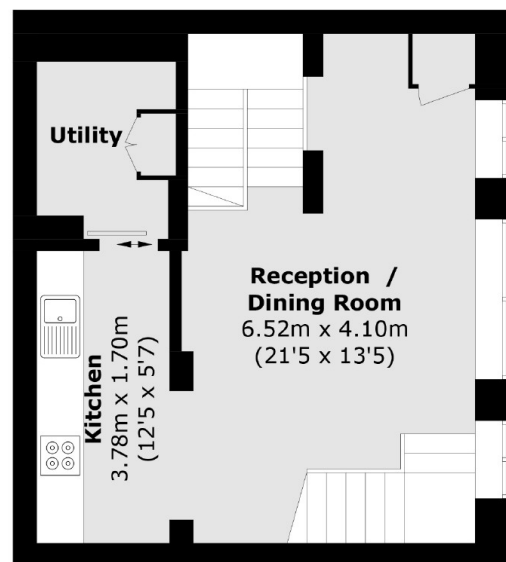
# Gathorne Street, London, E2



**Second Floor**



**Ground Floor**



**First Floor**

Total area (approx.): 82.6 sq. m (889.1 sq. ft)