



## Pear Tree Street, EC1V

£700,000

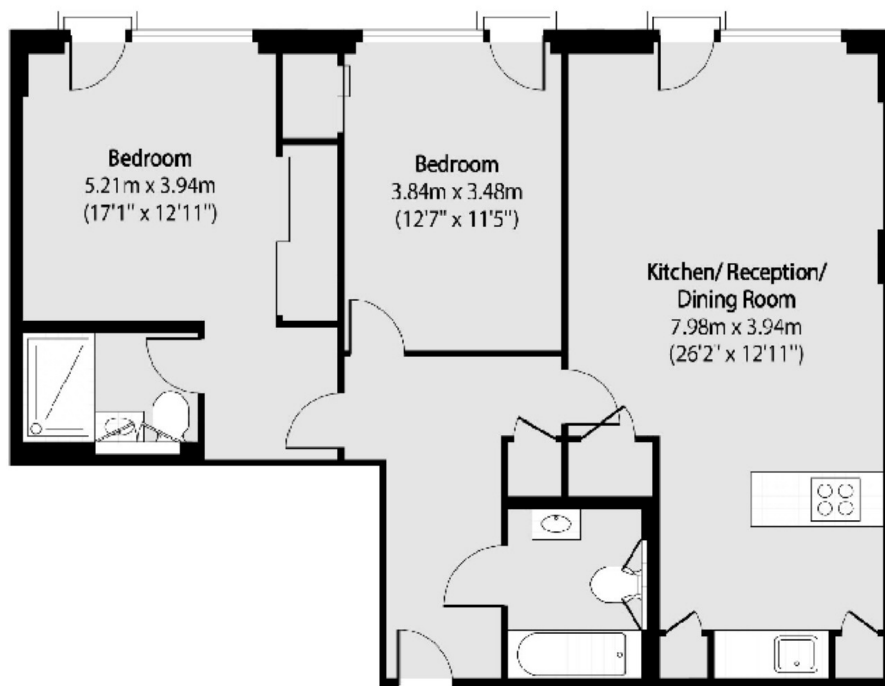
Set within a modern development in the City this two bedroom, two bathroom apartment offers a contemporary living style throughout. The property provides a modern kitchen with fitted appliances, ample space to dine and spacious living area. The Property benefits from two spacious double bedrooms, both with floor to ceiling windows, one of which is en-suite. There is also a separate additional full bathroom. The development gives residents access to a 24hr concierge and exclusive access to a communal gardens.

Located in this central location, the local area offers a selection of cafés, bars, restaurants and shopping opportunities. Transport links offered include Old Street (Northern/National Rail), Farringdon (Elizabeth Line) and Barbican (Metropolitan, Circle, Hammersmith&City) for journeys around the City and beyond

### Features

- Chain free
- Two bedrooms
- Two bathrooms
- Modern Interiors
- Sought After Central Location
- Great Transport Links
- 24hr concierge and communal garden

# Pear Tree Street, London, EC1V



Total area (approx): 73.30 sq m (789 sq. ft)