



Durward Street, E1

£550,000

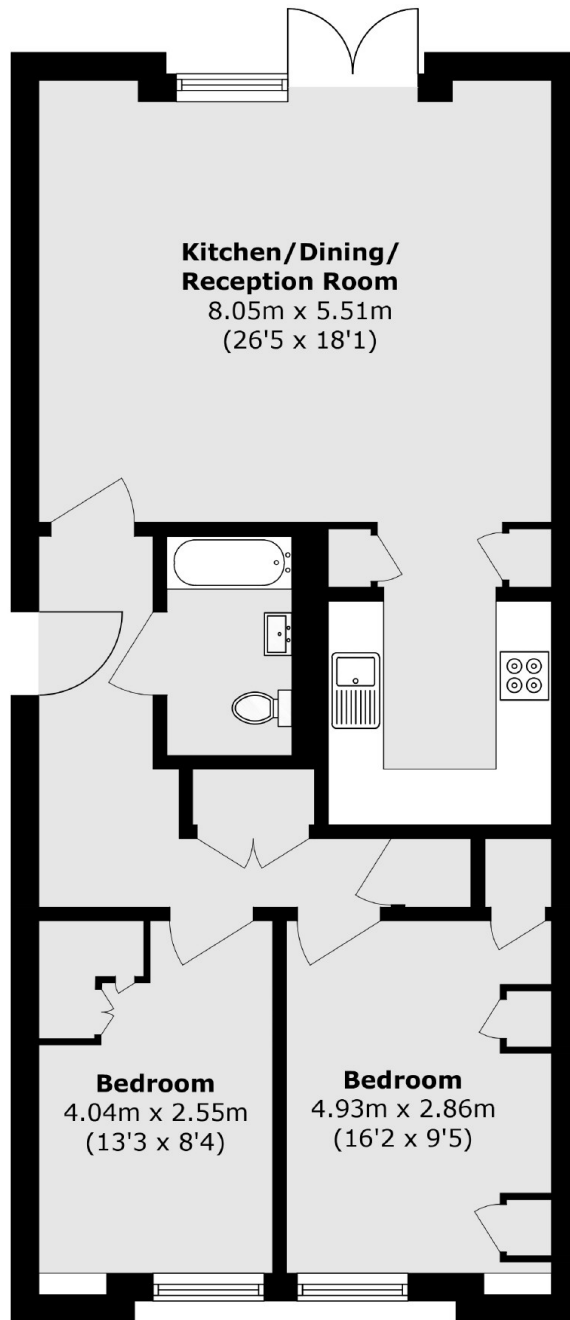
A two bedroom apartment situated on the ground floor of this sought after, gated development. The apartment offers contemporary, open plan living with space to dine and a modern integrated kitchen, this area leads onto a private balcony. The property also has two double bedrooms with built in storage, a good size family bathroom and an allocated parking space.

Located minutes from wide range of amenities found in Shoreditch and the City and the green spaces of Weavers Fields. The property is within a short distance of Whitechapel (Elizabeth, Circle, District and Hammersmith & City lines) providing easy access into Central London, Heathrow Airport and beyond.

Features

- Share of freehold
- Two Double Bedrooms
- Sought After Location
- Moments from Elizabeth Line
- Gate Development
- Off-Street Parking
- Private Balcony

Durward Street, London, E1



Total area (approx.): 70.8 sq. m (762.0 sq. ft)