



Kenworthy Road, E9

£699,950

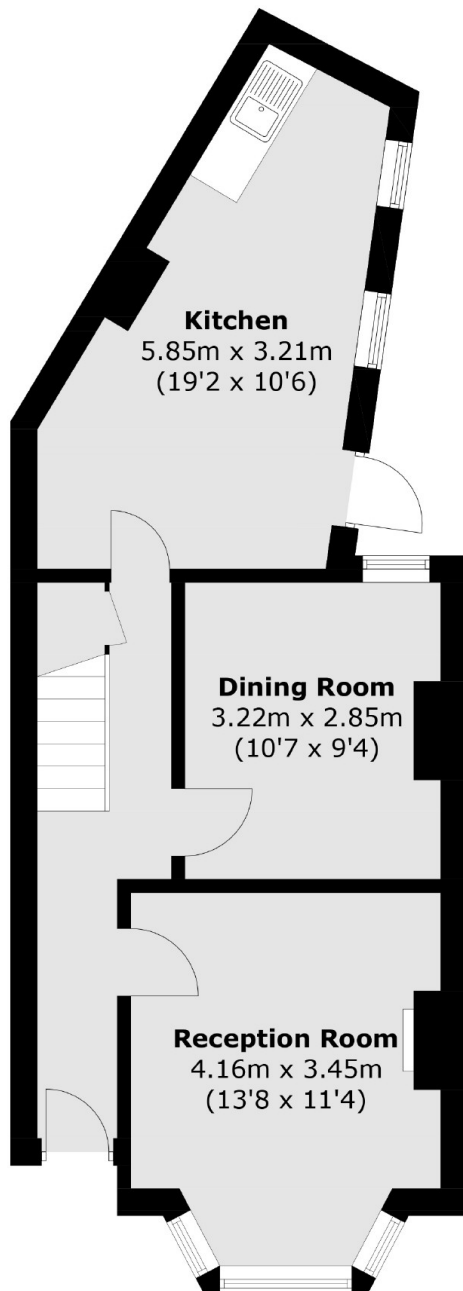
A two double bedroom Victorian end of terrace within close proximity to Victoria Park. The home measures over 1000 sq ft with separate dining room, reception room with bay window, spacious bedrooms and larger than average family bathroom. There is also potential to extend into the loft, subject to planning. It is being sold chain free.

Kenworthy Road is under a quarter of a mile from Victoria Park and Chatsworth Road with its weekend markets and shops, cafés and restaurants. The property is half a mile from Homerton Overground and just over half a mile from Hackney Wick station. The Hackney Marshes are under one mile away providing many opportunities for outdoor recreation.

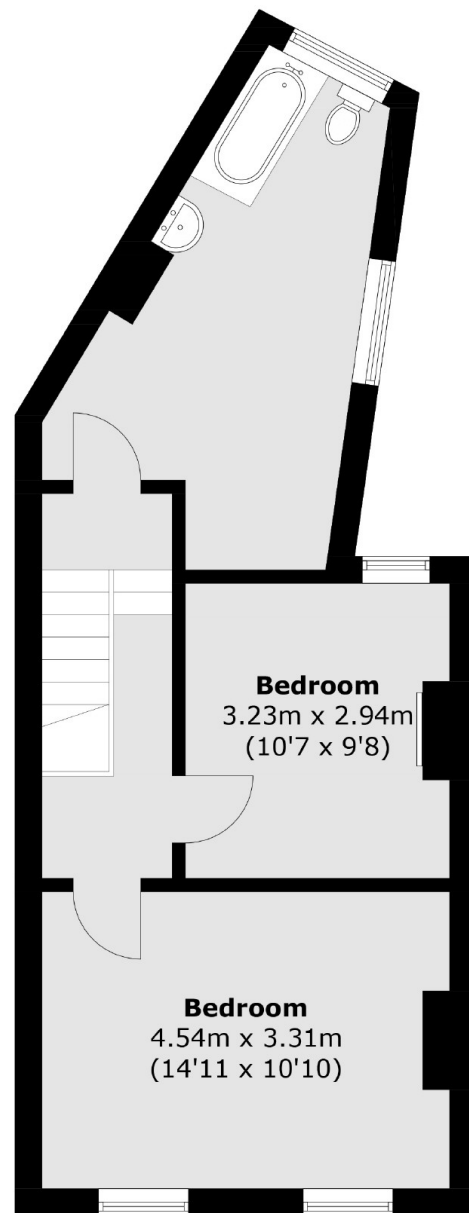
Features

- Two Double Bedrooms
- End of Terrace
- Potential To Extend (STPP)
- Garden
- Chain Free
- Renovation Potential
- Victoria Park

Kenworthy Road,
London, E9



Ground Floor



First Floor

Total area (approx.): 93.5 sq. m (1,006.4 sq. ft)