



Christian Street, E1

£275,000

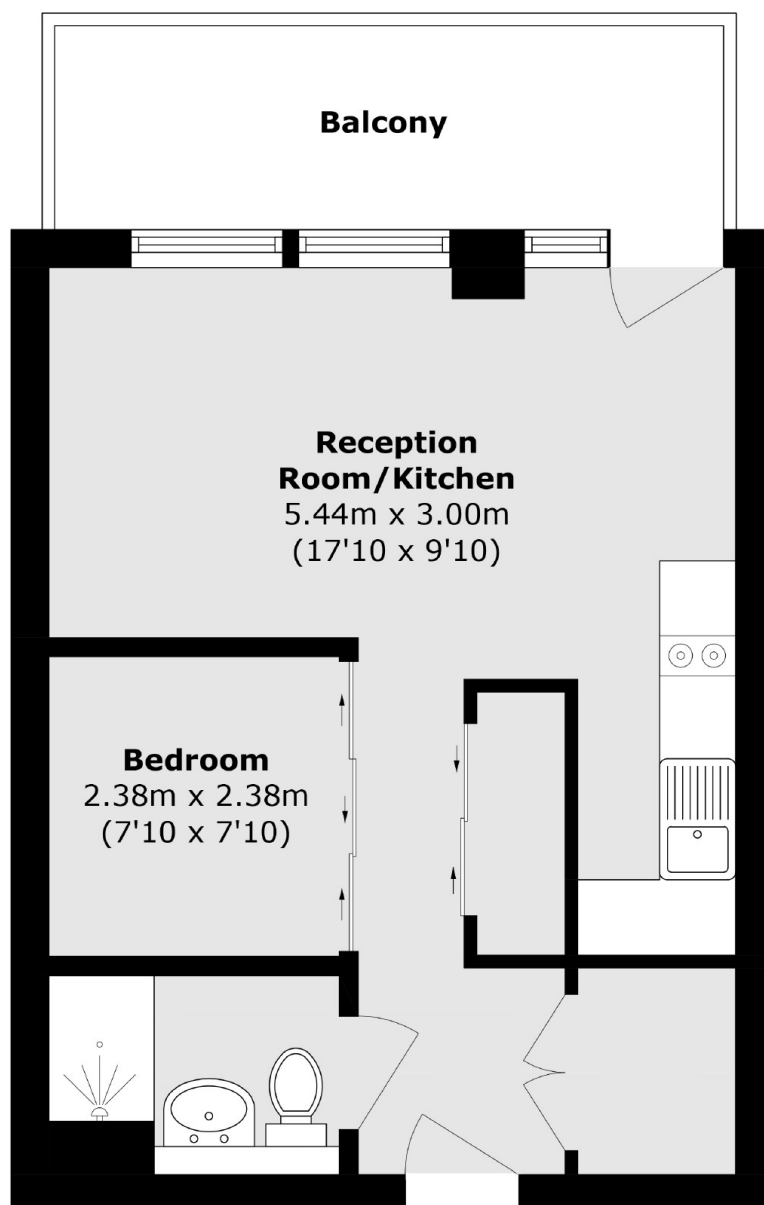
This fantastic studio apartment is on the 6th floor of a modern development. The property has a well organised layout with an open plan living room and fully fitted kitchen. The bedroom area can be separated by smart bi-folding panels. The property also benefits from an apartment length balcony with views. The development has an on-site concierge.

Christian Street is located close to the amenities available on Commercial Road and offers excellent transport links between Shadwell and Aldgate East stations.

Features

- Secure Development
- On-Site Concierge
- Open Plan Living Room & Kitchen
- Sought after location
- Private Balcony

Christian Street, London, E1



Total area (approx.): 39.1 sq. m (420.8 sq. ft)
Balcony area (approx.): 8.5 sq. m (91.4 sq. ft)