



## Commercial Road, E1

### £350,000

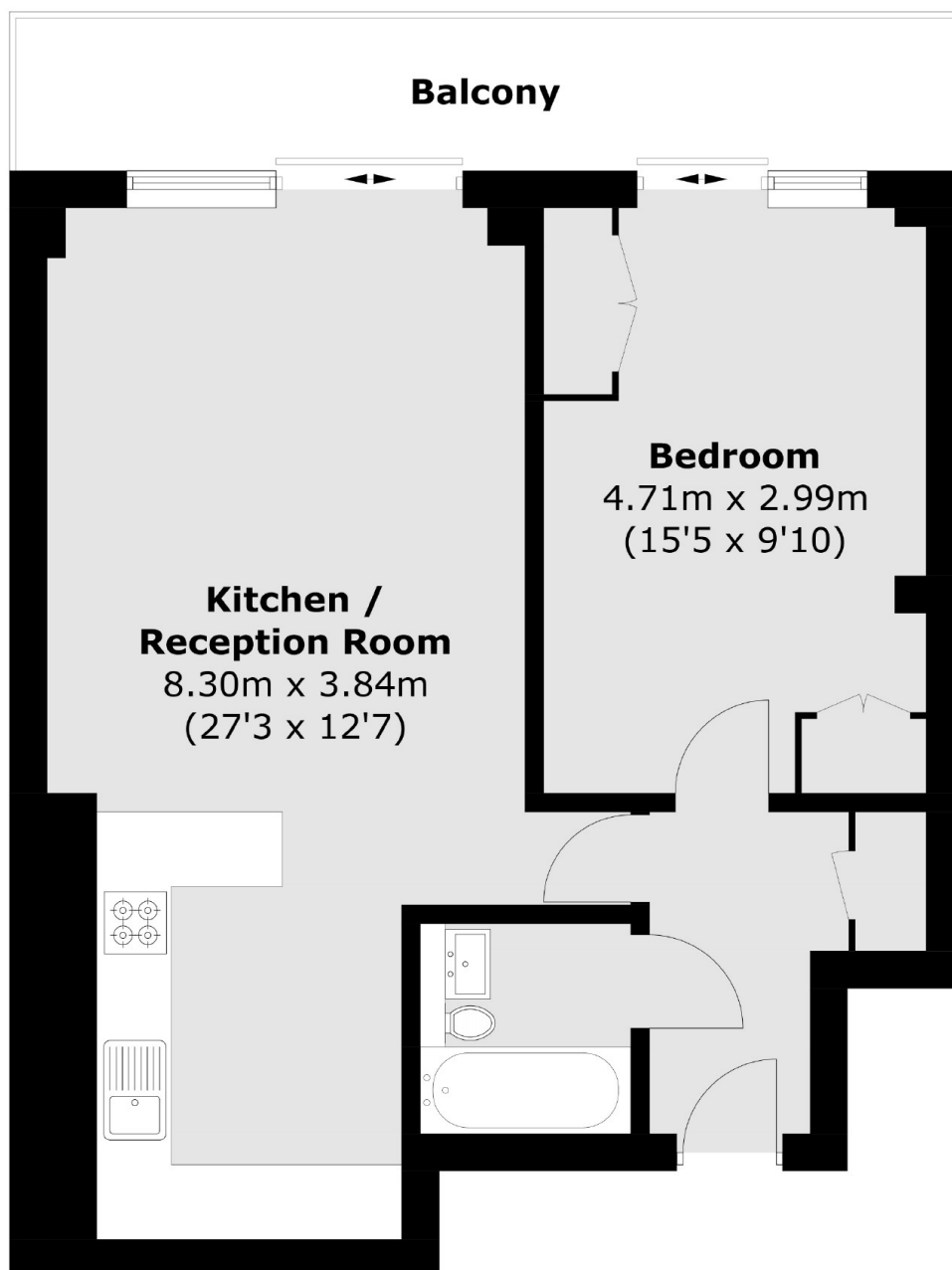
A spacious one bedroom apartment in a sought after location presented with modern interiors. This one bedroom apartment boasts an open plan living area with room to dine and a fully integrated kitchen with a breakfast bar, leading onto an apartment length balcony accessible via both the living area and the large double bedroom which comes with inbuilt storage. The development benefits from a large communal roof terrace accessible from the first floor of the building.

The property is situated moments from a range of shops and amenities that can be found on Commercial Road, while Aldgate East, Whitechapel and Shadwell stations are also within close proximity for links to all corners of the City and beyond.

### Features

- One Double Bedroom
- Sought After Location
- Private Block
- Lift Access
- Modern Interiors
- Apartment Length Balcony
- Communal Roof Terrace

# Commercial Road, London, E1



Total area (approx.): 54.2 sq. m (583.4 sq. ft)  
Balcony: 9.3 sq. m (100.1 sq. ft)

## Dexters

Shoreditch  
44 Great Eastern Street  
London  
EC2A 3EP  
Sales  
0207 483 6371

Energy Rating: C. We aim to make our particulars both accurate and reliable. However they are not guaranteed; nor do they form part of an offer or contract. If you require clarification on any points then please contact us, especially if you're traveling some distance to view. Please note that appliances and heating systems have not been tested and therefore no warranties can be given as to their good working order.

 **RICS** | Regulated  
Estate Agent  
and Letting Agent

[dexters.co.uk](https://www.dexters.co.uk)