



Bishops Way, E2

£650,000

OFFERS IN EXCESS OF £650,000 - This modern, four double-bedroom, split-level apartment located in Jacquard Court offers ample space. The lower level provides a modern, open-plan kitchen with built-in appliances and plenty of storage space, a good-sized reception area with access to the private balcony, one of four double bedrooms, currently being used as an at-home gym, and a separate WC.

OFFERS IN EXCESS OF £650,000 - Jacquard Court is two minutes from Cambridge Heath Overground Station (Weaver Line) and a seven minute walk from Bethnal Green Underground Station (Central Line) providing easy access throughout the city. This apartment also has great

Features

Offers in Excess of £650,000
Four Double Bedrooms
Split Level
Dual Aspect
Two Balconies
Communal Park
Allocated Storage

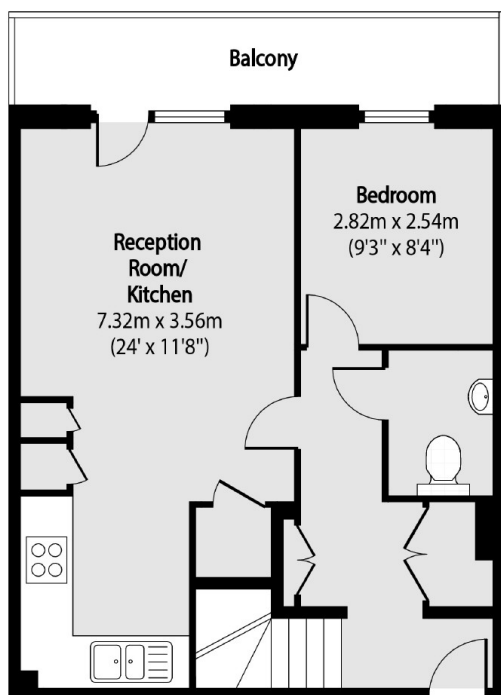


Bishops Way, E2

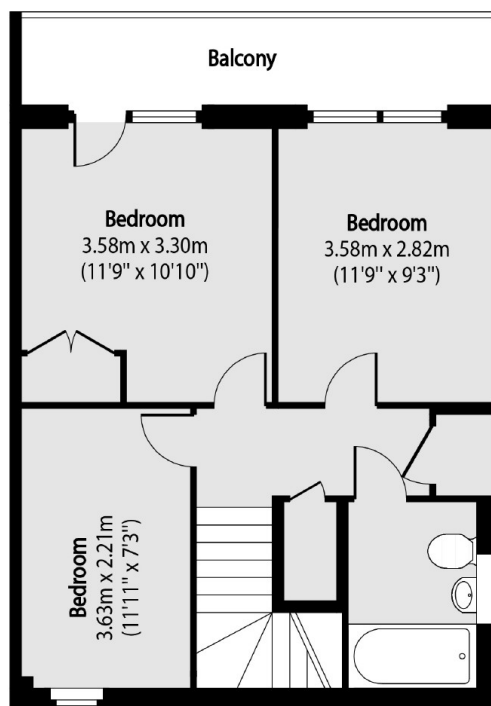
OFFERS IN EXCESS OF £650,000 - The upper level consists of three large double bedrooms, one with access to the second private balcony which runs the length of the property, and a contemporary family bathroom. The property offers built-in storage throughout and access to a large, outside family park space on the first floor.



Bishops Way, London, E2



Second Floor



Third Floor

Total area (approx): 90.48 sq m (974 sq. ft)

Balcony total area (approx): 14.30 sq m (154 sq. ft)