



## Leonard Street, EC2A

### £137,500

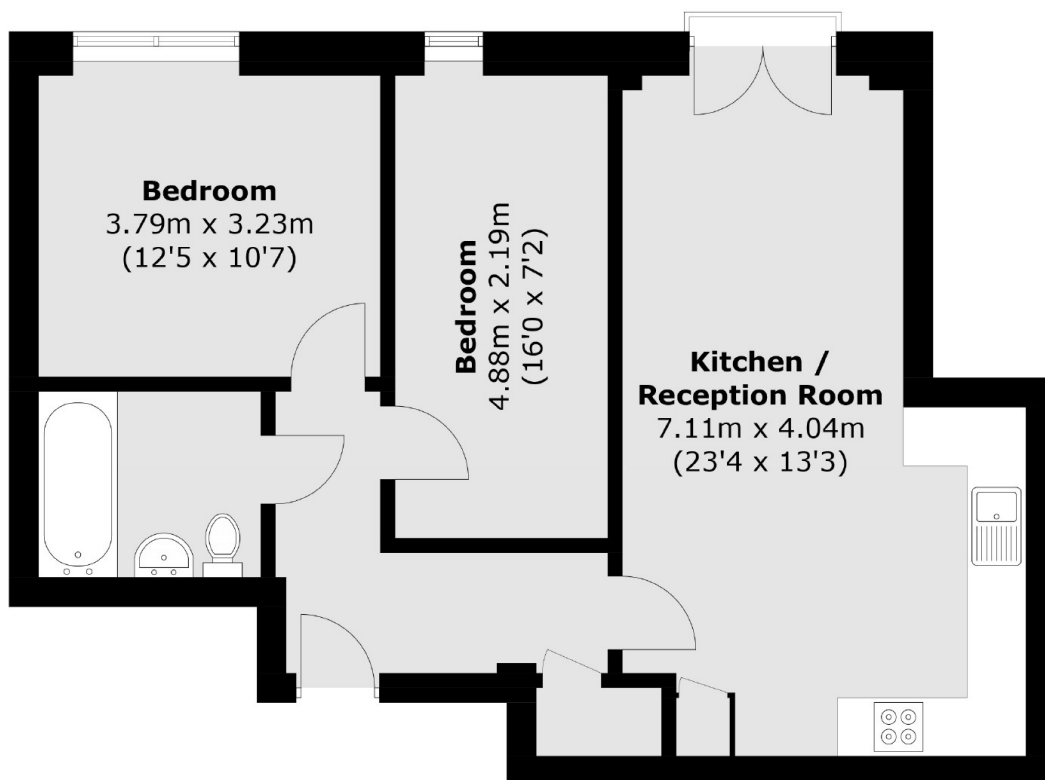
25% Shared Ownership - This two double bedroom flat in Shoreditch is located on the third floor with lift access and comprises two generously sized double bedrooms, one family bathroom, a hallway with large storage cupboard and an open plan kitchen and living area with Juliet balcony, providing plenty of natural light.

Leonard Street is just over 400 feet away from Old Street Station (Northern Line). The area also offers a wide range of shops, restaurants and boutiques.

### Features

- Two Double Bedrooms
- Open Plan
- Juliet Balcony
- Central Shoreditch Location
- Modern
- Chain Free

# Leonard Street, London, EC2A



Total area (approx.): 60.0 sq. m (645.8 sq. ft)