



## Columbia Road, E2

### £525,000

An open-plan mini-loft in a Victorian maisonette with double-height ceilings, sash windows, skylights, park views and double-height exposed brick walls which would benefit from updating. The property is an entire upper floor in the Conservation Area with loads of potential to create bespoke storage and differential height spaces, having been owned by the same vendor for 20 years.

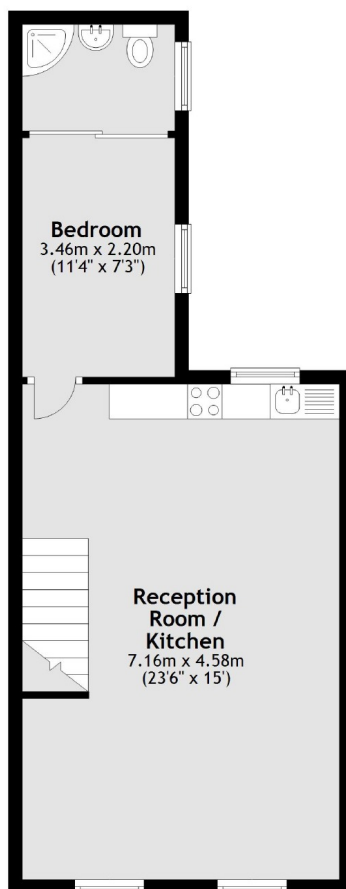
Located on the highly sought after Columbia Road, the area is well known for its famous flower market, restaurants and local cafés. The house is only a half mile from Shoreditch High Street station and under a mile from Bethnal Green Station.

### Features

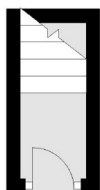
Columbia Road  
Private Entrance  
No Onward Chain  
Period Features  
Victorian Apartment

# Columbia Road, London, E2

## First Floor



## Ground Floor



Total area: approx. 46.4 sq. metres (499.2 sq. feet)