



Mace Street, E2

£350,000

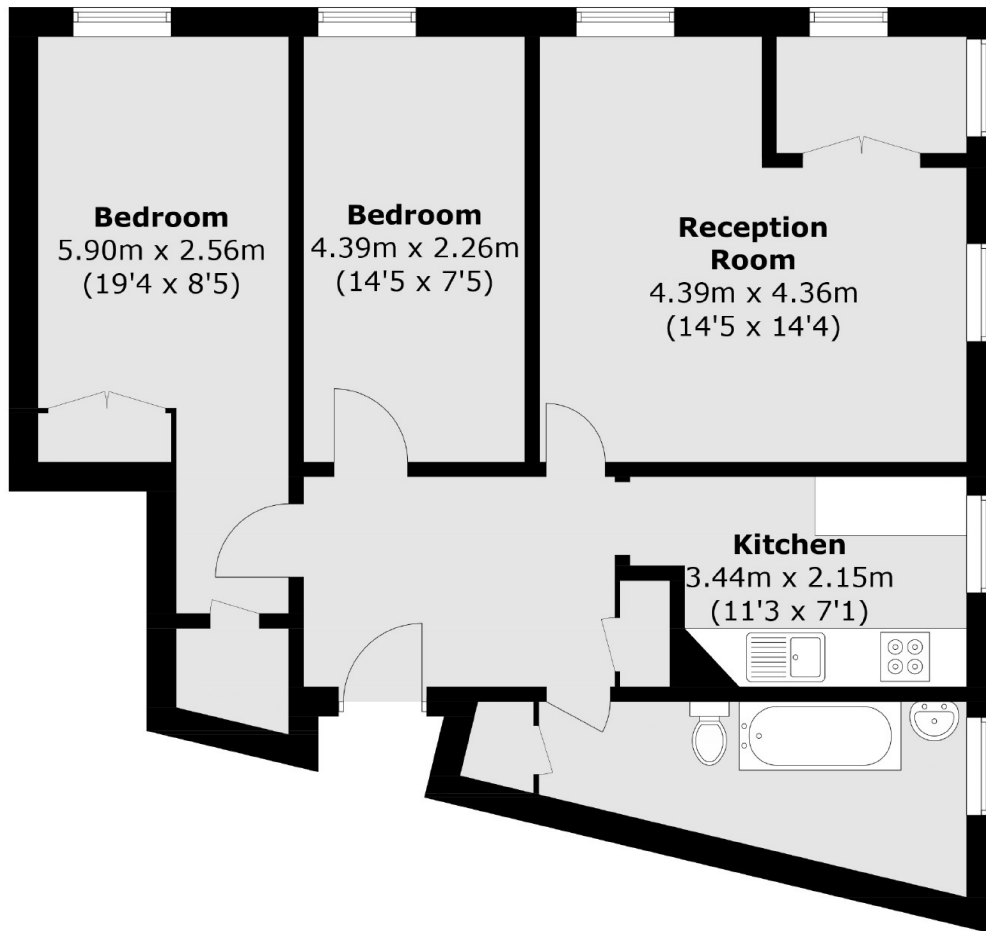
This two bedroom apartment comprises of a spacious reception room, a separate kitchen, two good sized double bedrooms, and wooden flooring throughout. The property offers dual aspect views and plenty of natural light.

The apartment is located a short distance to all the local amenities of Mile End and Bethnal Green including a wide variety of cafes, bars and restaurants.

Features

- Two Double Bedrooms
- Built in Storage
- Wooden Counter Tops
- Dual Aspect
- Wooden Flooring
- Winter Garden

Mace Street, London, E2



Total area (approx.): 68.1 sq. m (733.0 sq. ft)