



Portman Place, E2

£500,000

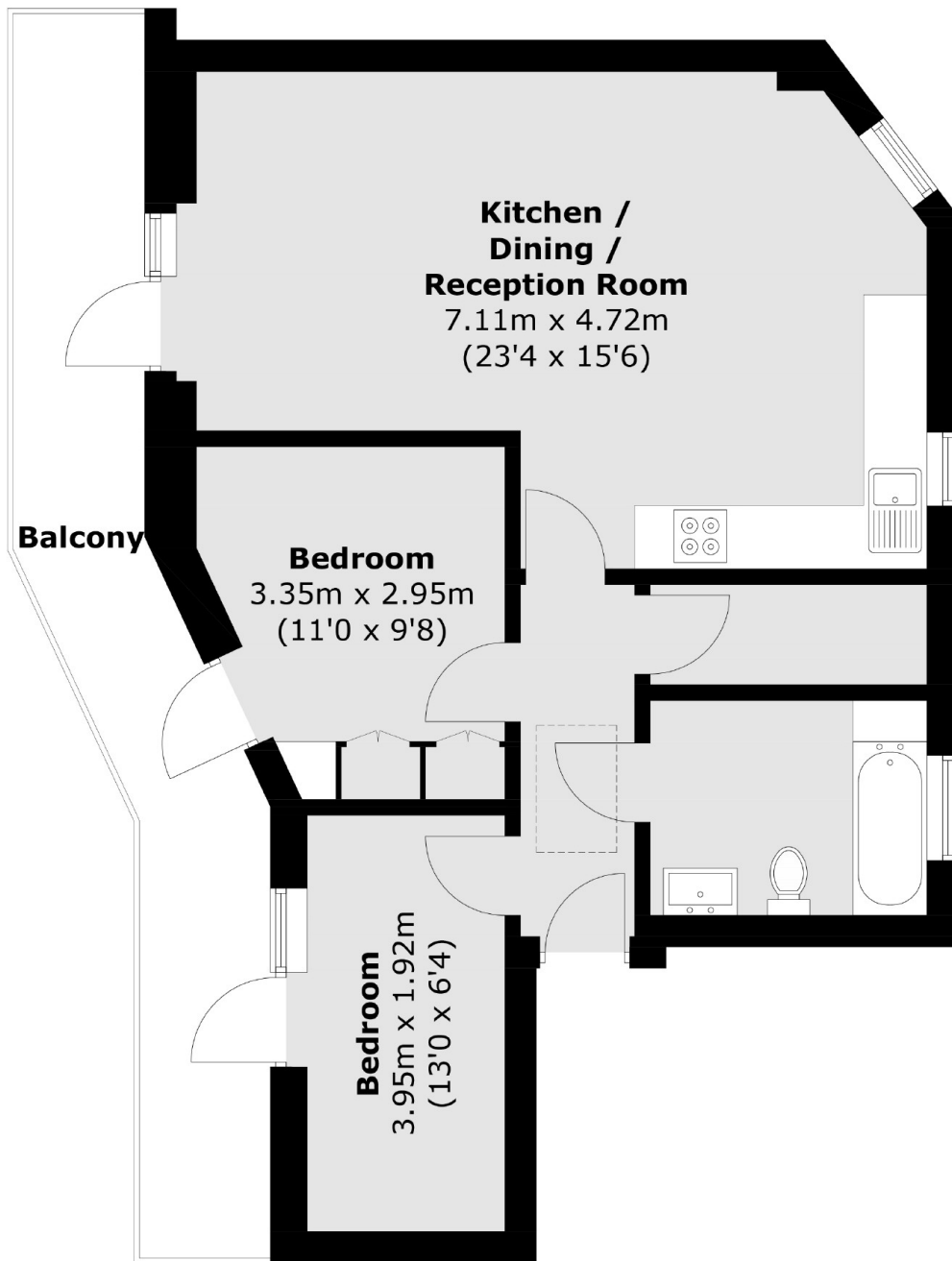
A top-floor, two bedroom apartment that provides contemporary city living. This south facing apartment offers panoramic city views with a full length, private, balcony. The apartment comprises of a bright open plan kitchen/living space with a modern kitchen, two double bedrooms with balcony access, family bathroom, and built in hallway storage.

Residents are within walking distance of numerous cafés, bars and restaurants, as well as the canal and Victoria Park. With fantastic access to public transportation ensures easy connectivity to the broader city, making it an ideal residence for those who appreciate both the local flair and the cosmopolitan charm of London.

Features

- Top Floor
- Private Balcony
- South Facing
- Open Plan
- Wooden Floors
- Modern Development

Portman Place, London, E2



Total area (approx.): 59.8 sq. m (643.7 sq. ft)
Balcony area (approx.): 14.8 sq. m (159.3 sq. ft)

Dexters

Shoreditch
44 Great Eastern Street
London
EC2A 3EP
Sales
0207 483 6371

Energy Rating: B. We aim to make our particulars both accurate and reliable. However they are not guaranteed; nor do they form part of an offer or contract. If you require clarification on any points then please contact us, especially if you're traveling some distance to view. Please note that appliances and heating systems have not been tested and therefore no warranties can be given as to their good working order.

 **RICS** | Regulated
Estate Agent
and Letting Agent

[dexters.co.uk](https://www.dexters.co.uk)