



Teesdale Street, E2

£800,000

OFFERS IN EXCESS OF £800,000 - A two double bedroom maisonette property split over two levels, with a generously sized open plan living room and kitchen, and wood flooring. This property has two good sized bedrooms, an east facing roof terrace, a newly renovated bathroom, and boasts period features throughout.

OFFERS IN EXCESS OF £800,000 - Located on a quiet street close to Hackney Road with its abundance of popular cafés and shops. There are travel links only half a mile walk away, such as, Cambridge Heath overground and Bethnal Green tube station.

Features

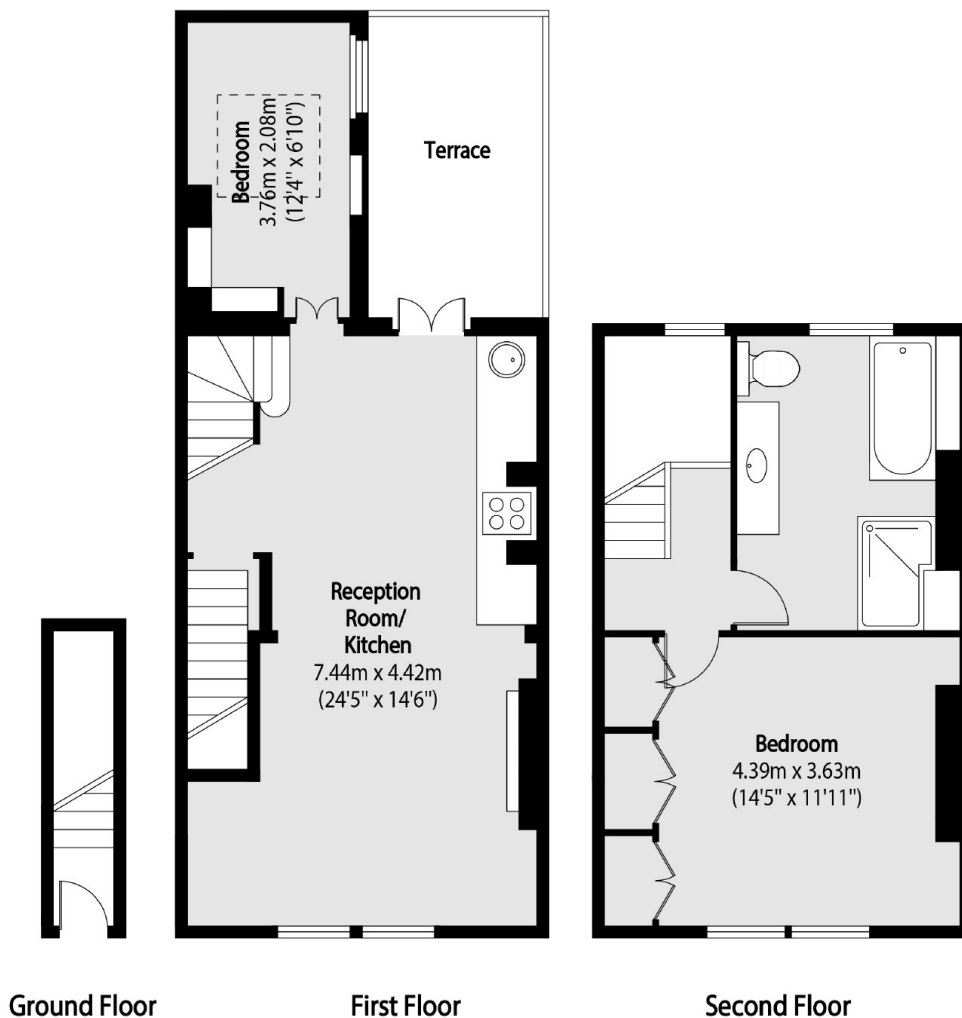
OFFERS IN EXCESS OF
£800,000
Two Double Bedrooms
Split Level
Private Terrace
Period Features
Wood Flooring
Good Transport Links



Teesdale Street, E2



Teesdale Street, London, E2



Total area (approx): 77.47 sq m (834 sq. ft)

Terrace total area (approx): 8.36 sq m (90 sq. ft)