



Moor Lane, EC2Y

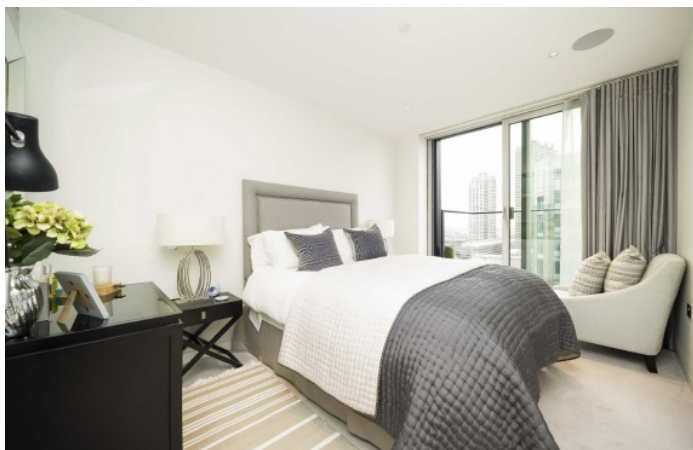
£700,000

This 15th floor apartment located within The Heron development offers open-planned design and top-of-the-range appliances. The kitchen features a wine chiller and coffee machine, and porcelain tiled floors throughout the reception/kitchen area. The large double bedroom includes a fitted wardrobe and the apartment benefits from two west-facing balconies and floor-ceiling windows.

Features

- City Views
- 24 Hour Concierge
- The Heron Club Amenities
- Fifteenth Floor
- Floor to Ceiling Windows
- Two West Facing Balconies

Located in the heart of the City of London and within easy reach of stations such as Bank, Moorgate, Barbican, Old

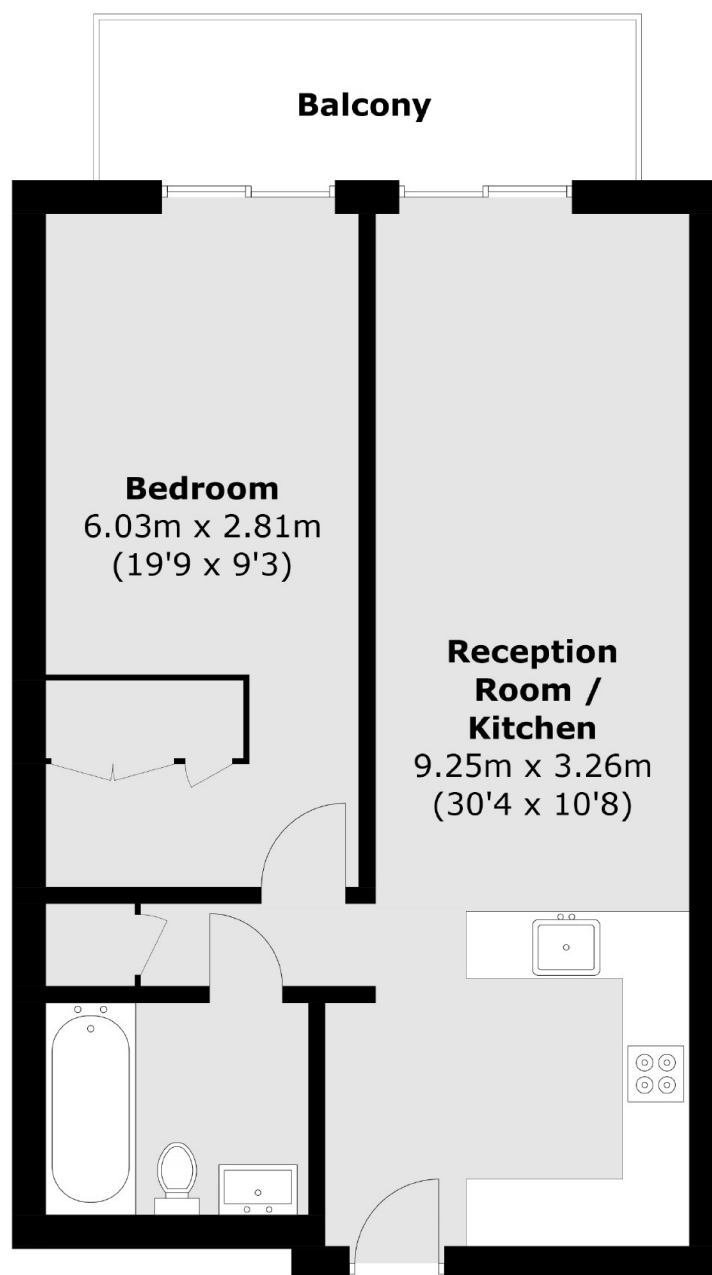


Moor Lane, EC2Y

The property comes equipped with the latest in home automation technology including air cooling, underfloor heating, a heated feature wall in the bathroom, mood light settings and integrated audio all controlled via a touchscreen central control panel. The development benefits from a 24-hour concierge and "The Heron Club" which consists of a residents' gym, conference meeting room, large HD cinema and an exclusive club with an open roof terrace, bar, and restaurant.



Moor Lane, London, EC2Y



Fifteenth Floor

Total area (approx.): 53.2 sq. m (572.6 sq. ft)
Balcony: 6.9 sq. m (74.3 sq. ft)

Dexters

Shoreditch
44 Great Eastern Street
London
EC2A 3EP
Sales
0207 483 6371

Energy Rating: . We aim to make our particulars both accurate and reliable. However they are not guaranteed; nor do they form part of an offer or contract. If you require clarification on any points then please contact us, especially if you're traveling some distance to view. Please note that appliances and heating systems have not been tested and therefore no warranties can be given as to their good working order.

 **RICS** | Regulated
Estate Agent
and Letting Agent

dexters.co.uk