



Columbia Road, E2

£670,000

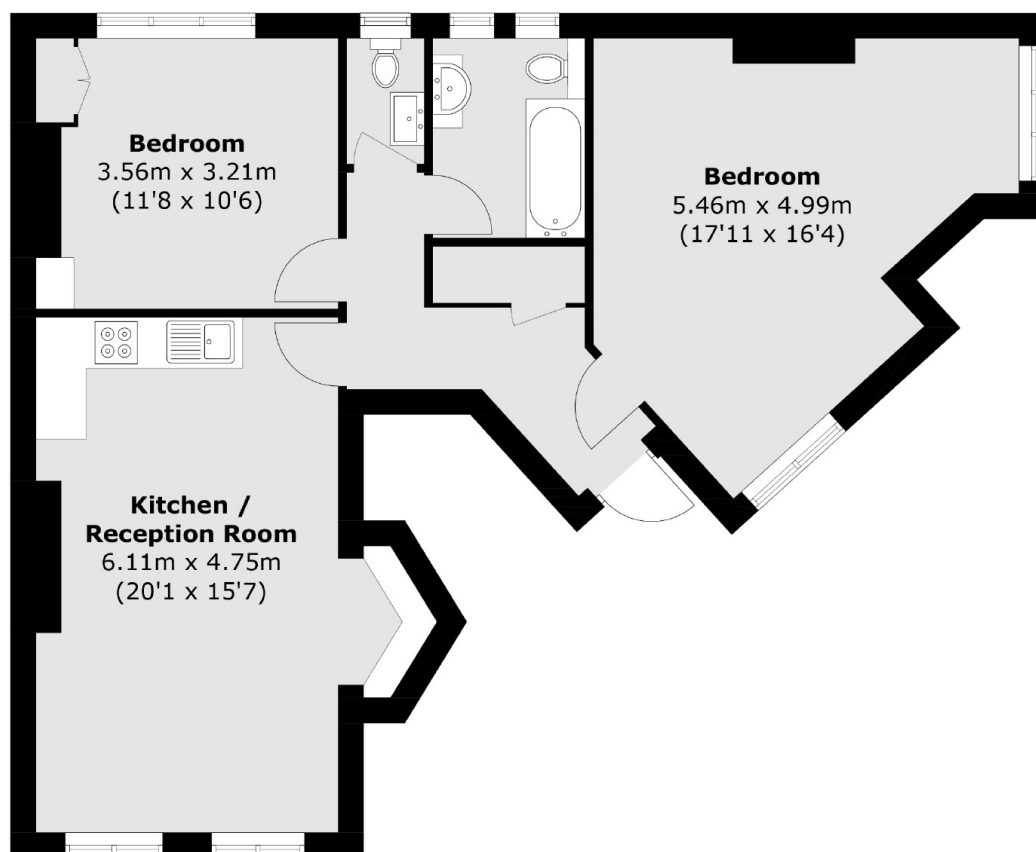
This large apartment offers two generously sized double bedrooms, a modern open plan kitchen/living room with integrated appliances, a split bathroom and W/C and engineered oak flooring throughout. The building retains its character with the original leaded windows.

Located at the top end of the Columbia Road Flower Market, the property is surrounded by local amenities such as restaurants, shops and parks. The property's location allows for an easy commute to the city via bus links, Overground at Shoreditch High Street and multiple tube lines from Liverpool Street station.

Features

- Two Double Bedrooms
- Period Conversion
- Open Plan
- Columbia Flower Market
- Original Leaded Windows
- Engineered Oak Floors

Columbia Road, London, E2



Total area (approx.): 69.1 sq. m (743.8 sq. ft)