



## Curtain Road, EC2A

£1,100,000

A bright, modern penthouse apartment situated on top of this period building in the heart of the Shoreditch triangle. This apartment is spread over two floors consisting of a contemporary open-plan kitchen/dining area and a large dual-aspect reception/entertaining space, with bi-folding doors opening to a large terrace.

Transport links include Old Street (Northern Line and National Rail), Shoreditch High Street (Overground Line) and Liverpool Street (Elizabeth, Central, Metropolitan, Hammersmith & City and Circle lines).

### Features

- Chain Free
- Penthouse
- Two Terraces
- Dual Aspect
- Wooden Floors
- City Views



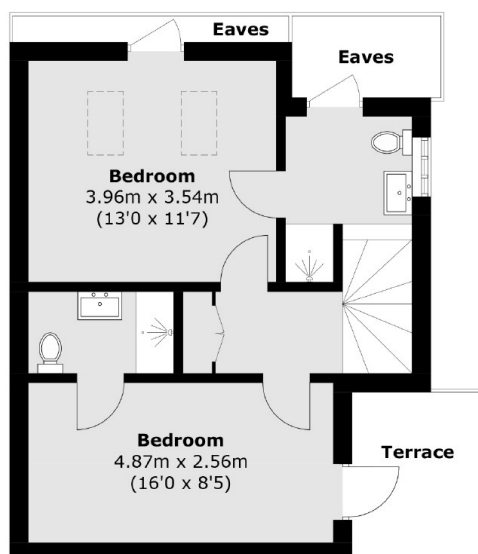
## Curtain Road, EC2A

The property boasts a high-standard finish with solid wood flooring with underfloor heating throughout, exposed brickwork, and two private terraces with far-reaching views across the City skyline. Upstairs is the master bedroom with an en-suite bathroom, and direct access to a private roof terrace, a further second double bedroom and a master bathroom.

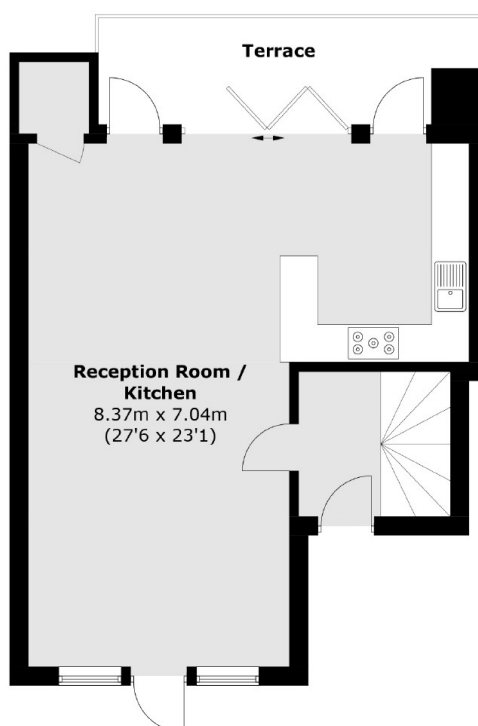




# Curtain Road, London, EC2A



**Fifth Floor**



**Fourth Floor**

Total area (approx.): 96.0 sq. m (1,033.3 sq. ft)  
(Excluding Eaves)  
Terrace: 15.3 sq. m (164.7 sq. ft)