



Basing Place, E2

£600,000

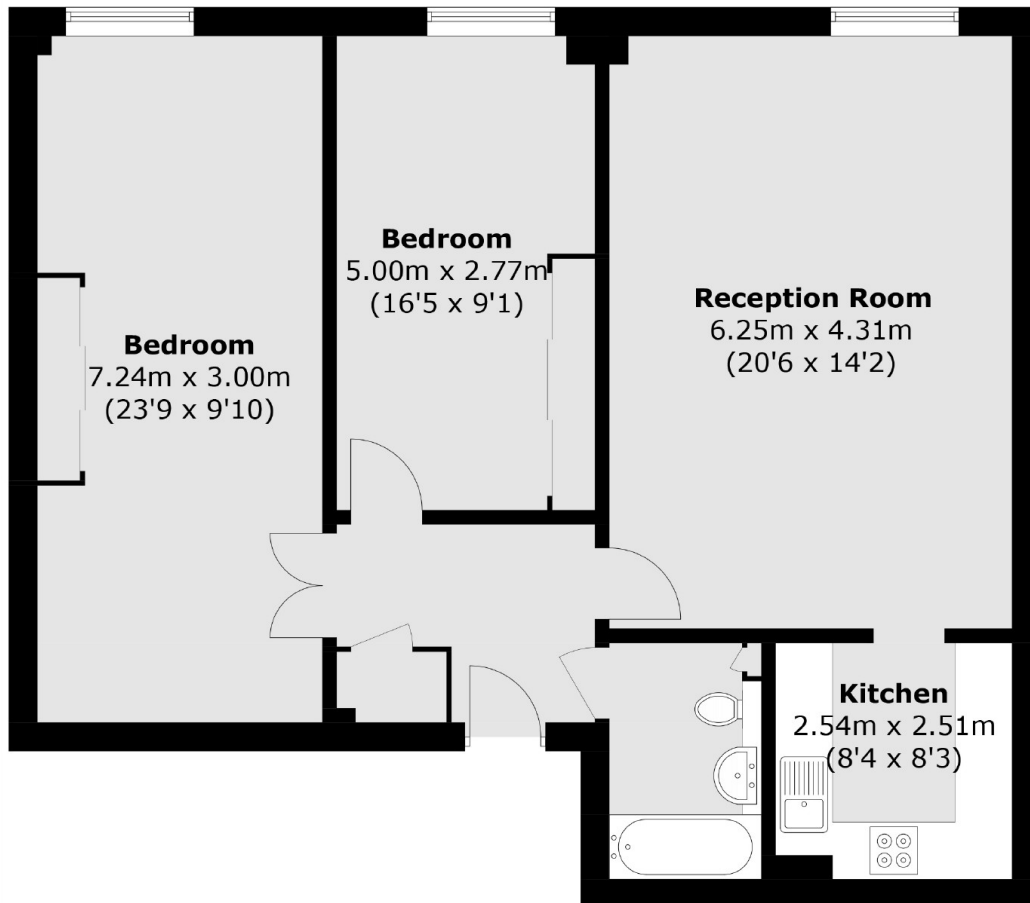
A two double bedroom apartment which sits within the converted Goddard & Gibbs Stained Glass Merchants. Located on the second floor, the apartment benefits from plenty of natural light thanks to its large windows. The flat comprises of two large bedrooms, family bathroom and open plan kitchen/reception area.

Glassworks Studios is located just 0.2 miles from the Shoreditch Triangle with its abundance of shops, restaurants and cafes. The nearest station is Hoxton overground at 0.2 miles. Old Street Station and the Northern Line are just half a mile away.

Features

- Two Double Bedrooms
- Open Plan
- Wooden Flooring
- Secure Block
- Hoxton Location

Basing Place, London, E2



Total area (approx.): 81.4 sq. m (876.2 sq. ft)