



Long Street, E2

£599,950

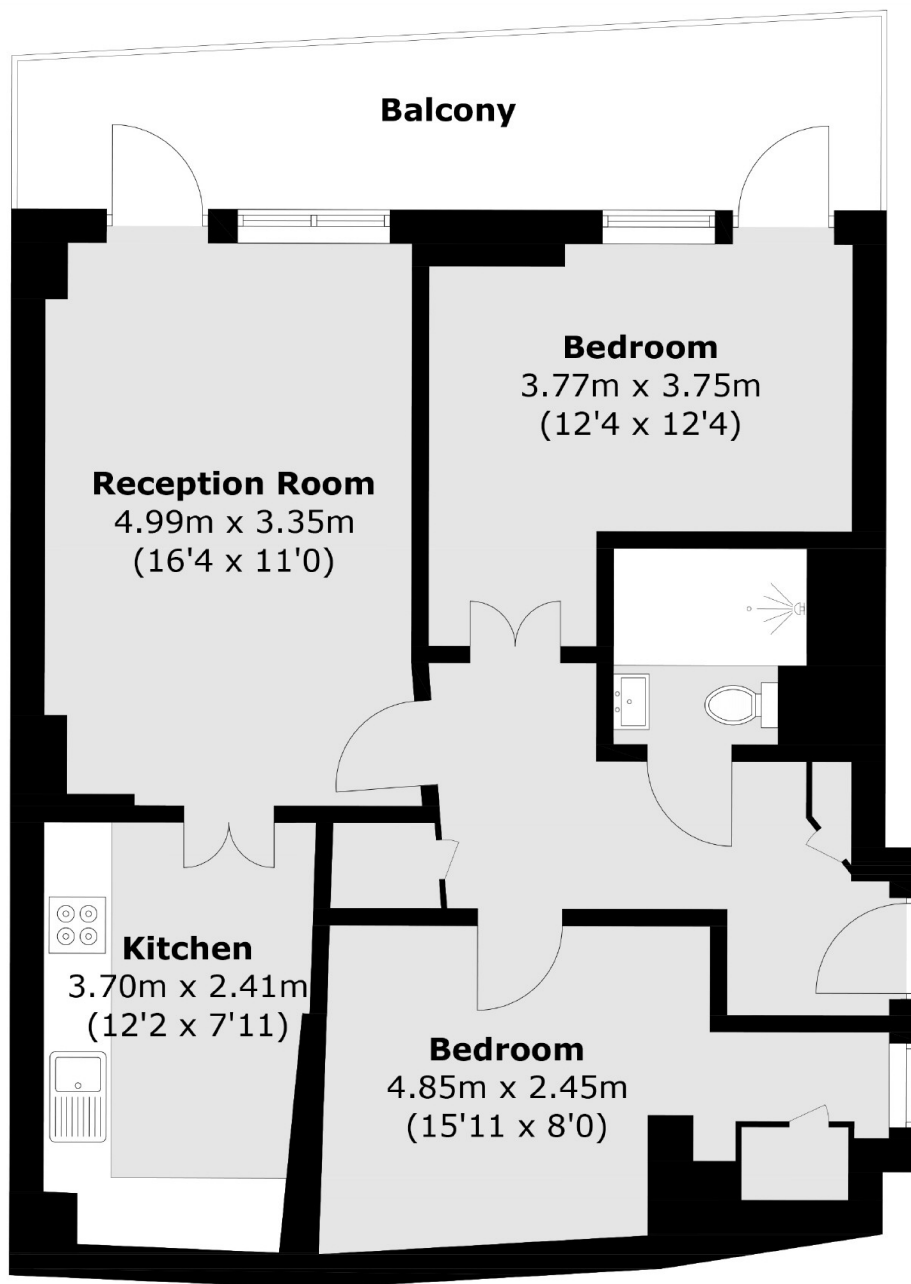
A two double bedroom apartment in a modern block next to Shoreditch High Street. This property features a separate kitchen, two bedrooms, and a good sized reception area with private balcony access.

Long Street is a quiet side street between Hackney and Kingsland Roads; ideally positioned around the corner from Shoreditch with endless bars, cafes and restaurants as well as a choice of weekend markets.

Features

- Private Balcony
- Modern Appliances
- Chain Free
- Good Transport Links
- Hoxton Station
- Wooden Flooring

Long Street, London, E2



Total area (approx.): 64.4 sq. m (693.2 sq. ft)
Balcony (approx.): 11.7 sq. m (125.9 sq. ft)