



Old Bethnal Green Road, E2

£650,000

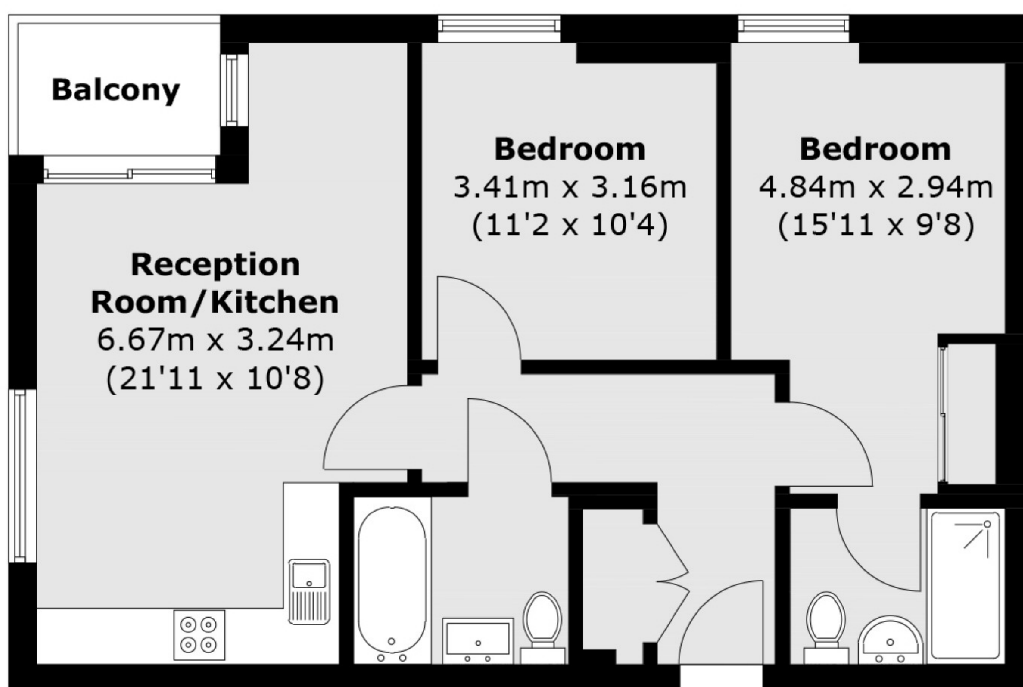
A spacious and bright two double bedroom apartment located within a purpose built block. This property features an open plan kitchen/living area, two large double bedrooms, one with en suite, a modern family bathroom, and a private balcony. The property provides dual aspect views and plenty of storage space throughout. The apartment also benefits from an owned, allocated private parking space.

Located within walking distance of Bethnal Green Tube Station, providing access to the Central Line, and Bethnal Green Overground Station. Close by Columbia Road, the area offers a selection of cafes, restaurants and boutiques.

Features

- Two Double Bedrooms
- En Suite
- Private Balcony
- Two Bathrooms
- Off Street Parking
- Dual Aspect

Old Bethnal Green Road, London, E2



Total area (approx.): 65.8 sq. m (708.2 sq. ft)
Balcony area (approx.): 3.02 sq. m (32.5 sq. ft)