



## Principal Place, EC2A

£800,000

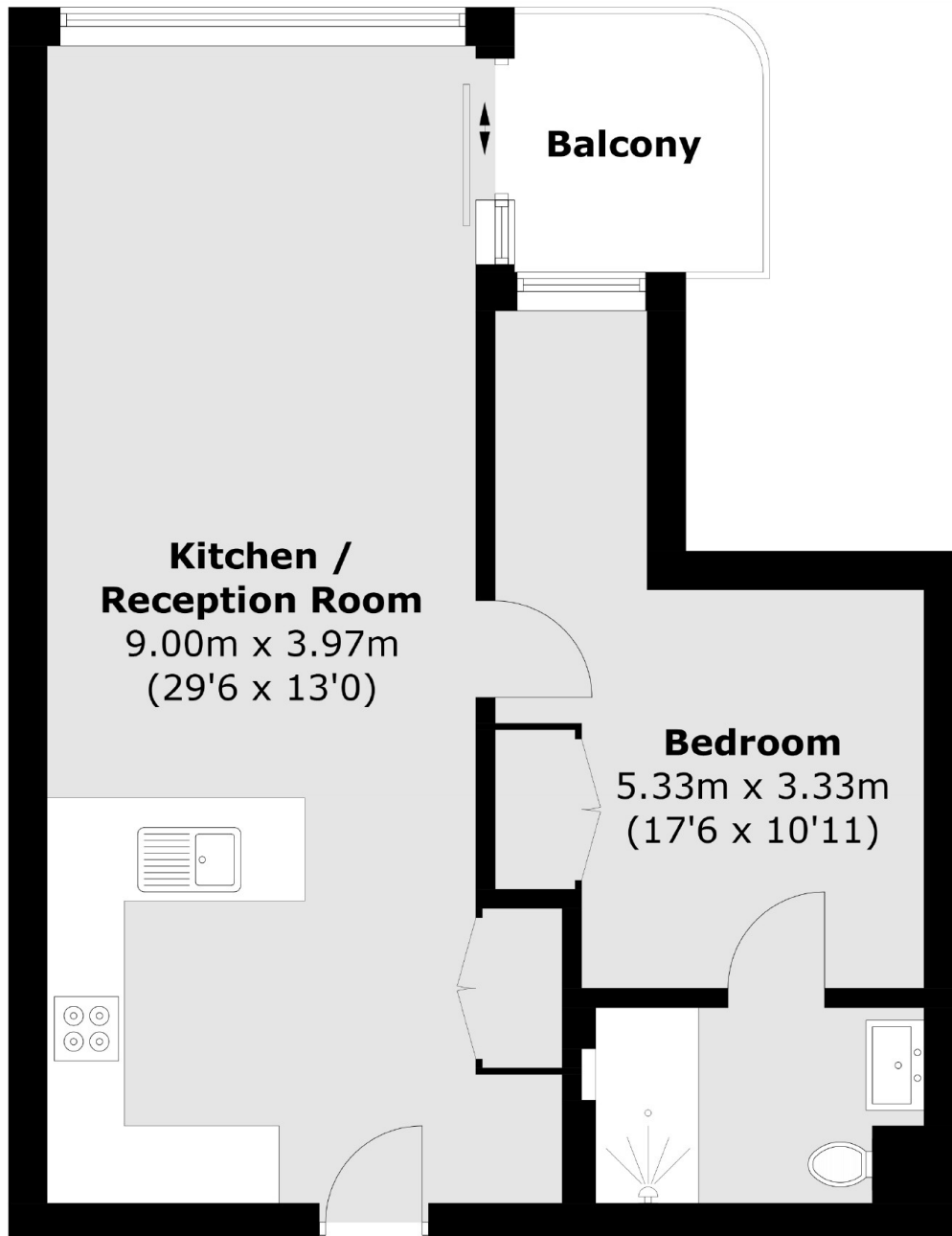
This one-bedroom apartment in Principle Tower is located on the 28th floor and is in excellent condition. The property benefits from floor-to-ceiling windows with west facing views a fully-equipped kitchen featuring composite stone surfaces and integrated appliances: a stainless steel sink, a Miele oven and hob, a fridge/freezer, and a wine cooler. Residents of Principal Tower have access to a range of facilities, such as a luxury spa and gym, and cinema room, plus an incredible 7.5 acres of landscaped garden space.

Principal Tower is situated close to Liverpool Street Station, with access to multiple tube lines and National Rail, and Shoreditch High Street Station (Overground). In addition to this, it is a short walk from Spitalfields Market and all the boutiques, shops, and bars it has to offer.

### Features

- Air conditioning
- West Facing Balcony
- On site Gym, Spa and Pool
- 24-Hour Concierge
- 28th Floor
- Floor to Ceiling Windows

Principal Place,  
London, EC2A



Total area (approx.): 49.7 sq. m (535.0 sq. ft)  
Balcony : 3.8 sq. m (40.9 sq. ft)

**Dexters**

Shoreditch  
44 Great Eastern Street  
London  
EC2A 3EP  
Sales  
0207 483 6371

Energy Rating: B. We aim to make our particulars both accurate and reliable. However they are not guaranteed; nor do they form part of an offer or contract. If you require clarification on any points then please contact us, especially if you're traveling some distance to view. Please note that appliances and heating systems have not been tested and therefore no warranties can be given as to their good working order.

 **RICS** | Regulated  
Estate Agent  
and Letting Agent

[dexters.co.uk](https://www.dexters.co.uk)