



Bethnal Green Road, E2

£475,000

A modern two bedroom church conversion close to Bethnal Green tube station. This apartment has a large reception, separate kitchen area, two good sized double bedrooms, and main bathroom. The property also features wooden flooring throughout and dual aspect views.

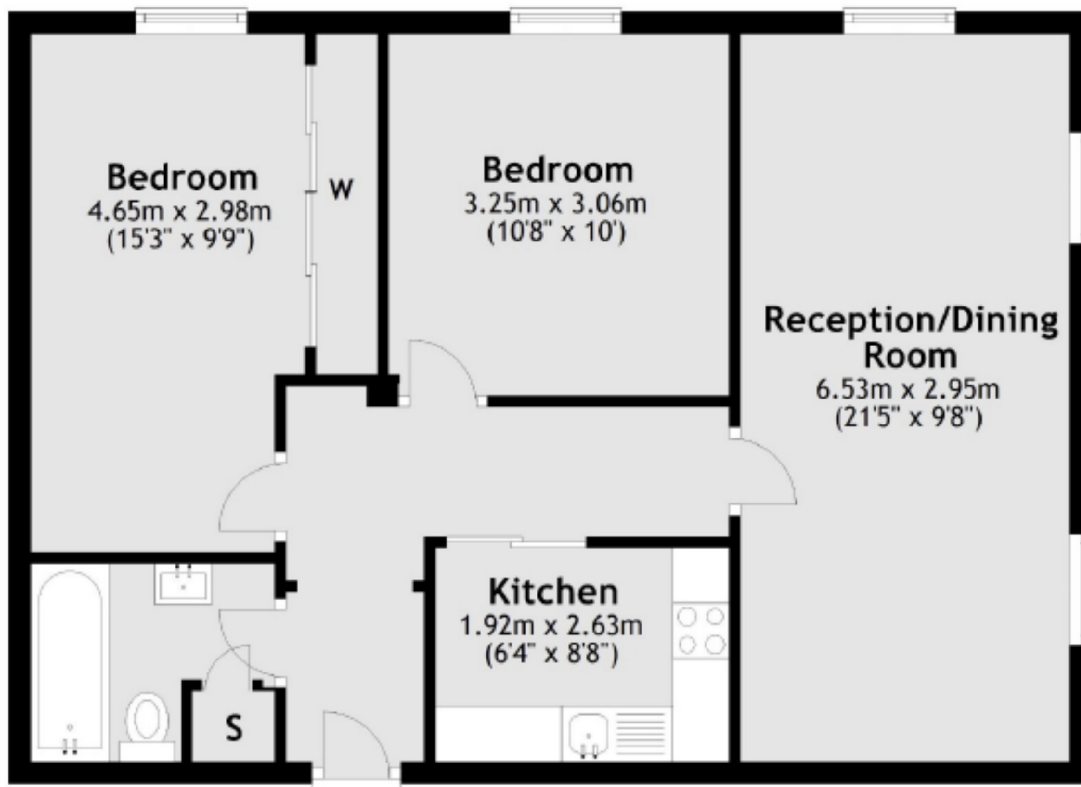
St. James Court is located a short distance from multiple tube stations and bus routes such as Bethnal Green, Shoreditch High Street and Cambridge Heath Stations. The famous flower market at Columbia Road and the vibrant Broadway Market are both within easy reach offering an array of restaurants, bars and shops as well as the green spaces of Victoria park.

Features

- Church Conversion
- Two Double Bedrooms
- South Facing
- Excellent Transport Links
- Chain Free
- Dual Aspect

Bethnal Green Road, London, E2

Ground Floor



Total area: approx. 60.9 sq. metres (655.1 sq. feet)