



## Portman Place, E2

£550,000

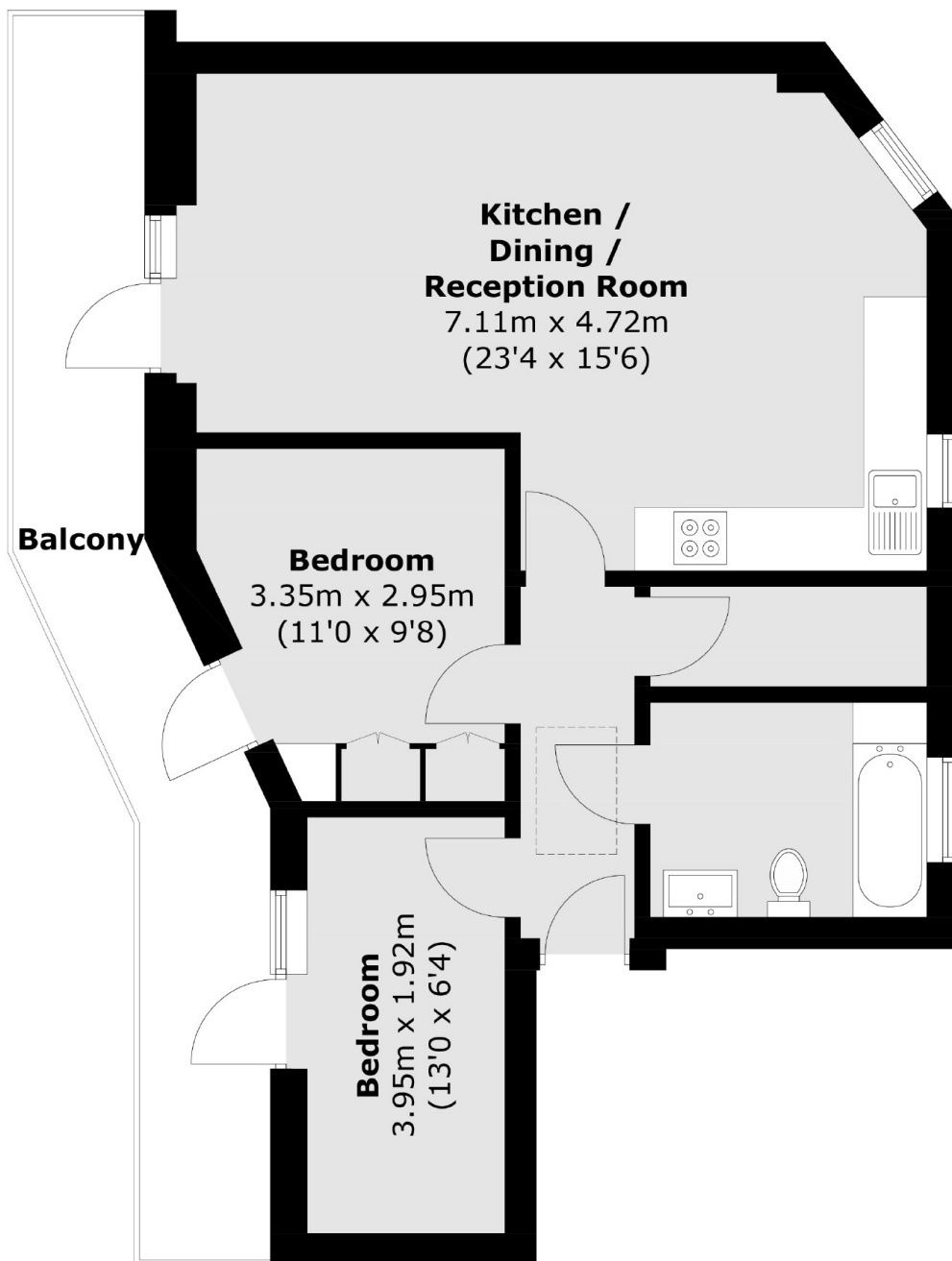
A top-floor, two bedroom apartment that provides contemporary city living. This south facing apartment offers panoramic city views with a full length, private, balcony. The apartment comprises of a bright open plan kitchen/living space with a modern kitchen, two double bedrooms with balcony access, family bathroom, and built in hallway storage.

Residents are within walking distance of numerous cafés, bars and restaurants, as well as the canal and Victoria Park. With fantastic access to public transportation ensures easy connectivity to the broader city, making it an ideal residence for those who appreciate both the local flair and the cosmopolitan charm of London.

### Features

- Top Floor
- Private Balcony
- South Facing
- Open Plan
- Wooden Floors
- Modern Development

# Portman Place, London, E2



Total area (approx.): 59.8 sq. m (643.7 sq. ft)  
Balcony area (approx.): 14.8 sq. m (159.3 sq. ft)