



## Poole Street, N1

£600,000

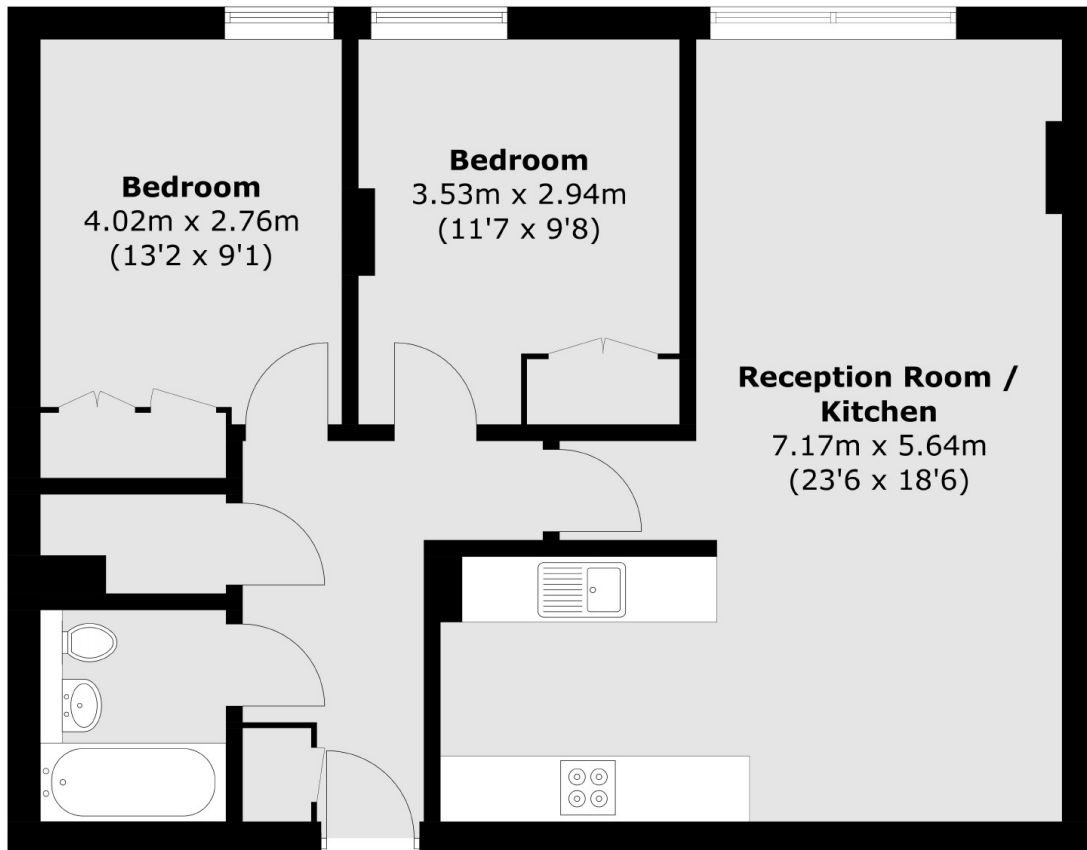
A two double bedroom, one bathroom apartment located in the popular development of Gainsborough Studios South, (Alfred Hitchcock's former Films studios). This property offers a spacious, open plan living and kitchen/dining area with plenty of natural light, two large double bedrooms, and wooden flooring throughout.

### Features

- Gainsborough Studios
- Two Double Bedrooms
- Built in Storage
- Concierge
- Chain Free
- Close to Shoreditch Park

Located just half a mile from Old Street Underground (Northern line), half a mile From Essex Road Station (National Rail) and just over half mile from Haggerston station (National Rail). Within walking distance of Shoreditch Park and Regents Canal.

# Poole Street, London, N1



Total area (approx.): 67.2 sq. m (723.3 sq. ft)