



Mansell Street, E1

£500,000

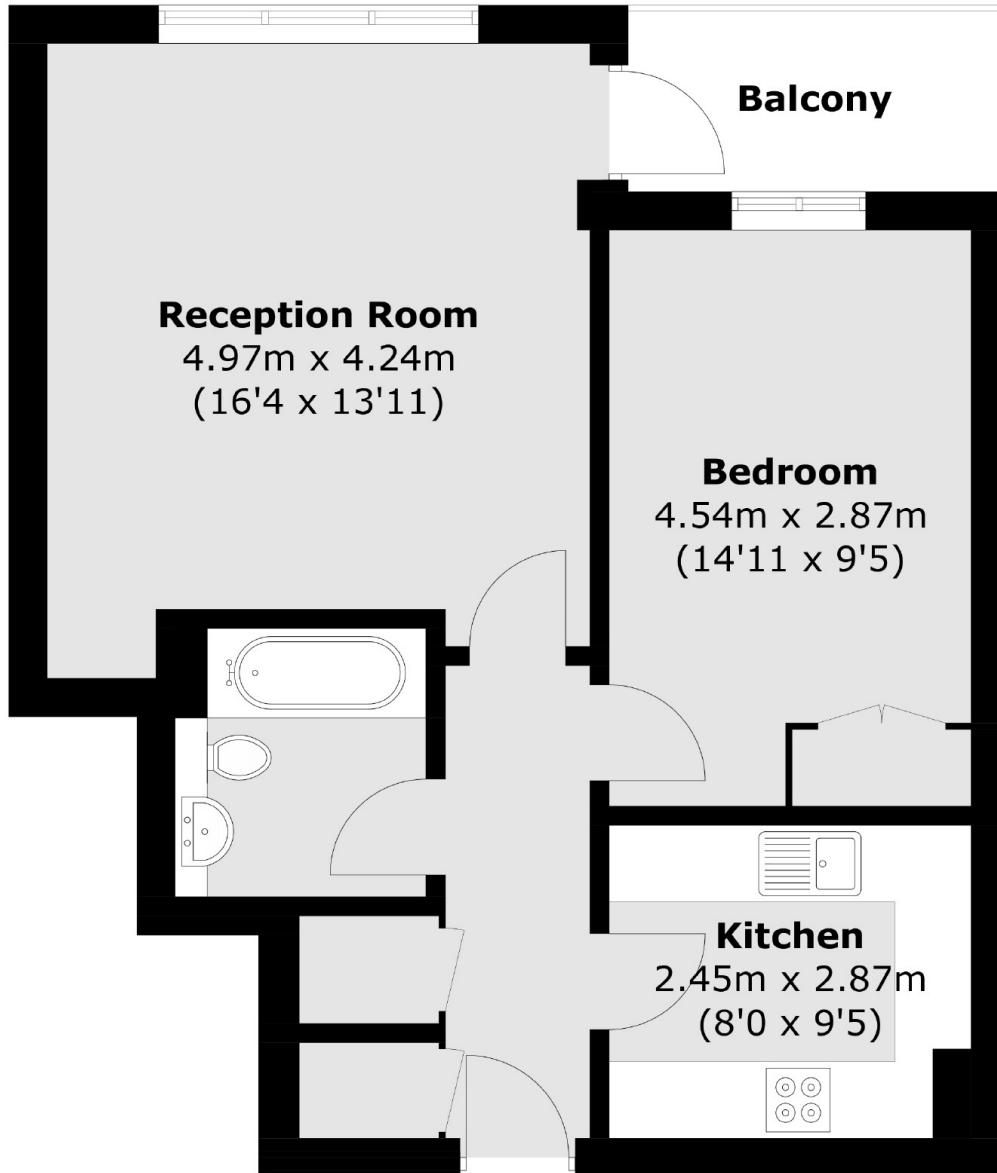
A bright, one double bedroom property spread over 537 sq.ft. This property comprises of a spacious reception room with balcony access, fitted kitchen with integrated appliances, a double bedroom with built in wardrobes, and family bathroom. The property benefits from double glazing throughout, on site concierge and lift access.

Londinium Tower is very well located just 100 yards from the DLR at Tower Hill, and less than a quarter of a mile from the tubes at Aldgate, Aldgate East and Tower Hill, and the overland rail at Fenchurch Street. As such, a myriad of shops and restaurants await on your doorstep as well as the St Katherine's Dock and offices in the City.

Features

- Good Transport Links
- Covered Balcony
- Built In Storage
- Wooden Flooring
- Lift Access
- Concierge

Mansell Street, London, E1



Total area (approx.): 52.4 sq. m (564.0 sq. ft)
Balcony area (approx.): 4.1 sq. m (44.1 sq. ft)