



## Avantgarde Place, E1

£750,000

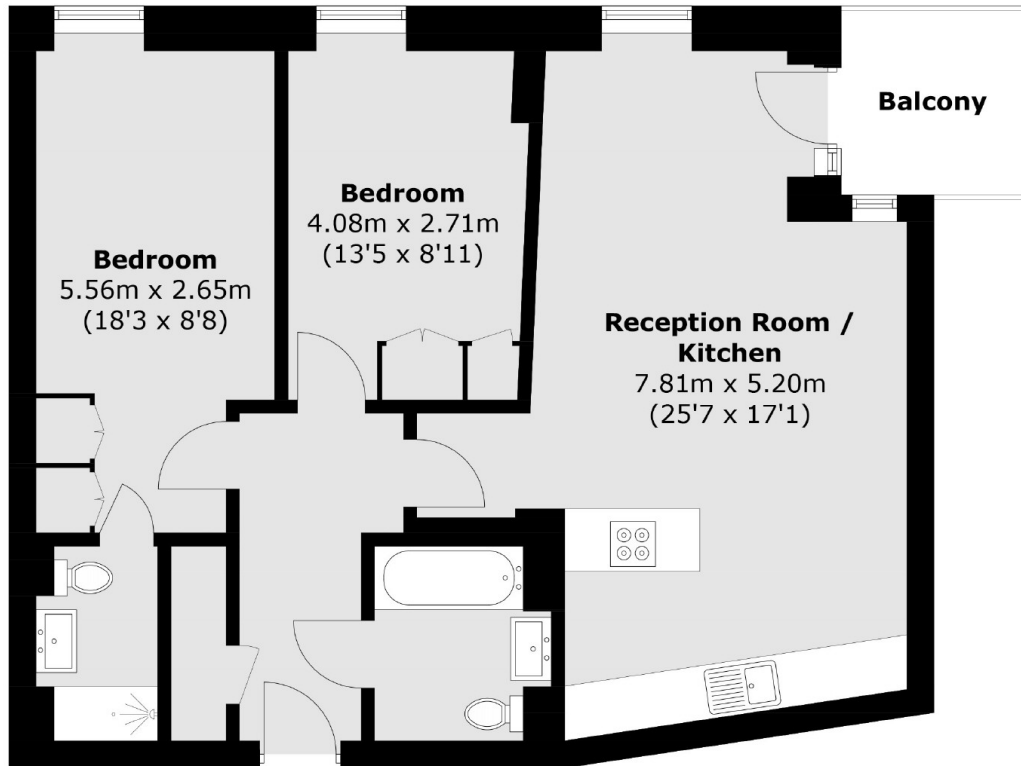
This modern, spacious apartment located on the 9th floor features two double bedrooms, one with en suite bathroom, a family bathroom, a modern kitchen, and large covered balcony. The building benefits from a 24 hour concierge, communal courtyard, communal roof terrace, secure bicycle storage and parking space, and a residents gym.

This apartment is located in the centre of Shoreditch with the abundance of eateries, bars and shops close by. Shoreditch High Street Station (Overground), Liverpool Street (Elizabeth Line), and Old Street Station are all within walking distance.

### Features

- Two Bedrooms
- Roof Terrace
- 24 Hour Concierge
- Parking Space
- Gym
- Central Shoreditch Location

# Avantgarde Place, London, E1



Total area (approx.): 72.0 sq. m (775.0 sq. ft)  
Balcony : 4.1 sq. m (44.1 sq. ft)