



## Queensbridge Road, E2

£550,000

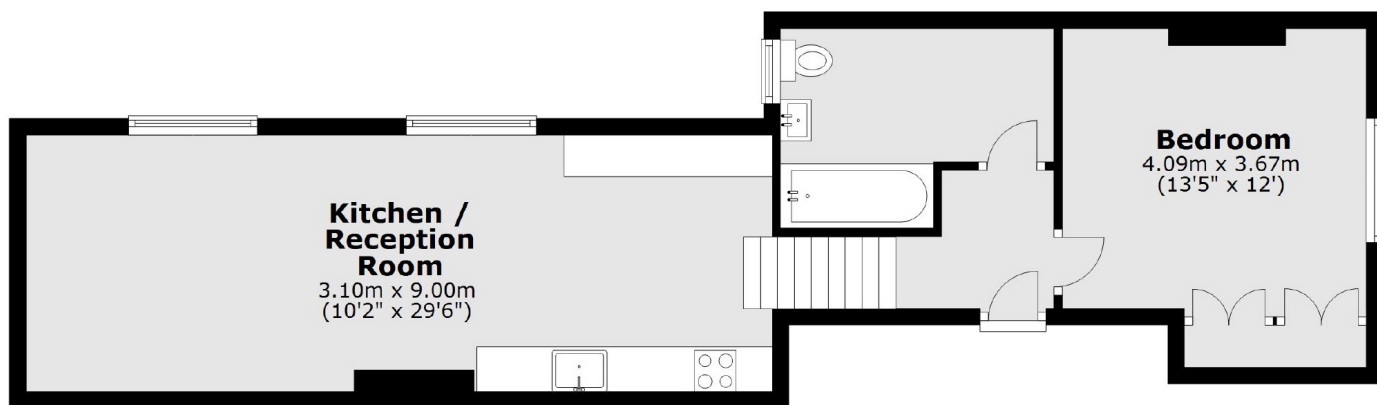
A charming Victorian Grade II listed one-bedroom apartment located just off Hackney Road. The property is made up of a large, open-plan, kitchen/living room with hard wood floors and ample counter space, a spacious double bedroom with built in storage and features traditional sash windows throughout.

Situated between Columbia Road Flower Market and Broadway Market, this property has an abundance of cafes, restaurants, and shops on its doorstep. Transport links include Hoxton Station (Overground), Old Street Station (Northern Line), Benthall Green (Central Line and the multiple lines at Liverpool Street station).

### Features

- Modern Kitchen
- Ground Floor
- Terraced
- Wooden Flooring
- Grade Two Listed
- Long Lease

# Queensbridge Road, London, E2



Total area: approx. 53.6 sq. metres (576.7 sq. feet)

**Dexters**

Shoreditch  
44 Great Eastern Street  
London  
EC2A 3EP  
Sales  
0207 483 6371

Energy Rating: D. We aim to make our particulars both accurate and reliable. However they are not guaranteed; nor do they form part of an offer or contract. If you require clarification on any points then please contact us, especially if you're traveling some distance to view. Please note that appliances and heating systems have not been tested and therefore no warranties can be given as to their good working order.

 **RICS** | Regulated  
Estate Agent  
and Letting Agent

[dexters.co.uk](https://www.dexters.co.uk)