



## Folgate Street, E1

£675,000

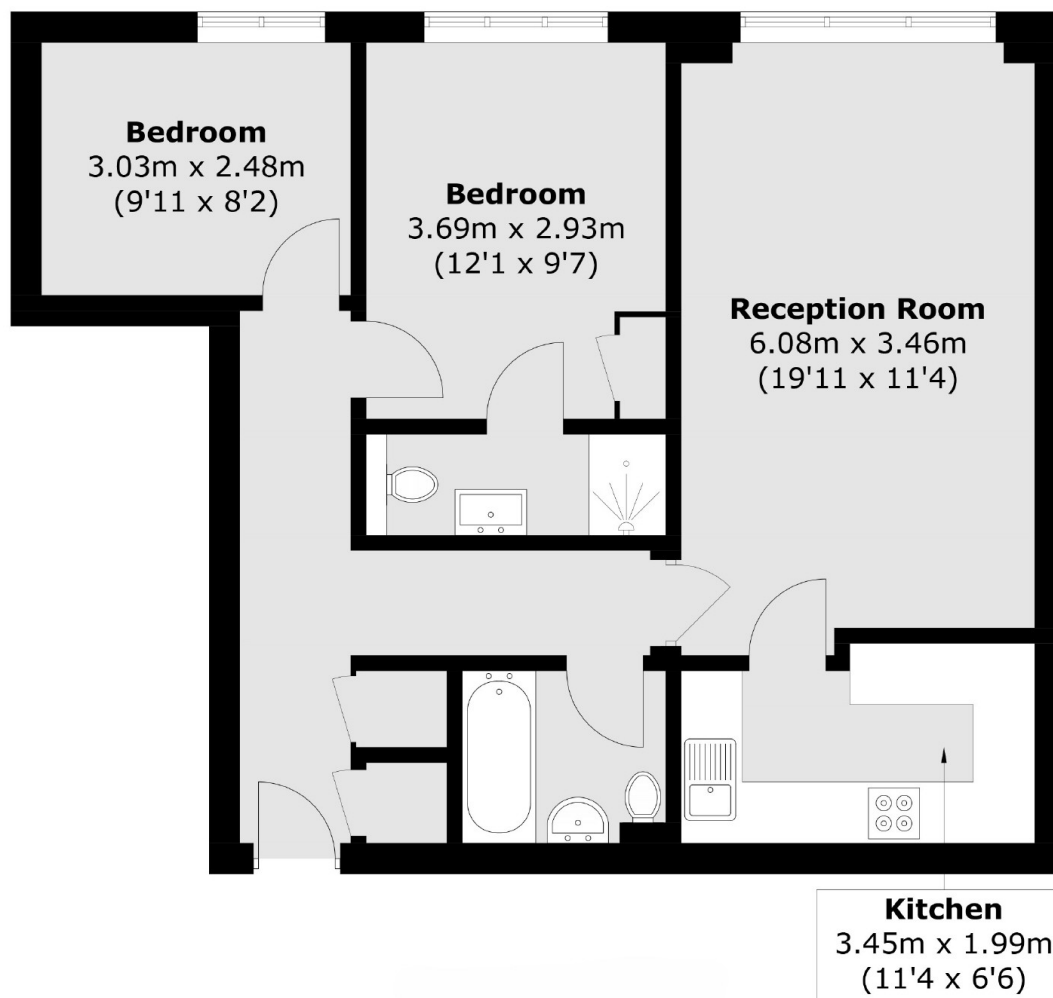
A two-bedroom, two-bathroom apartment on the fourth floor, ideally located next to Spitalfields Market. This apartment offers two double bedrooms, one with an en-suite bathroom, a modern family bathroom, plenty of built-in storage, and wooden floors throughout. The development also benefits from off street parking and gym access.

Folgate Street is a cobbled stoned street only a third of a mile from both Liverpool Street Station and Aldgate East Station. The area also offers a wide range of shops, restaurants and boutiques.

### Features

- Two Double Bedrooms
- Parking Space
- En Suite
- Communal Gardens
- Concierge
- Spitalfields Market

# Folgate Street, London, E1



Total area (approx.): 66.0 sq. m ( 710.4 sq. ft)