



Commercial Road, E1

£363,000

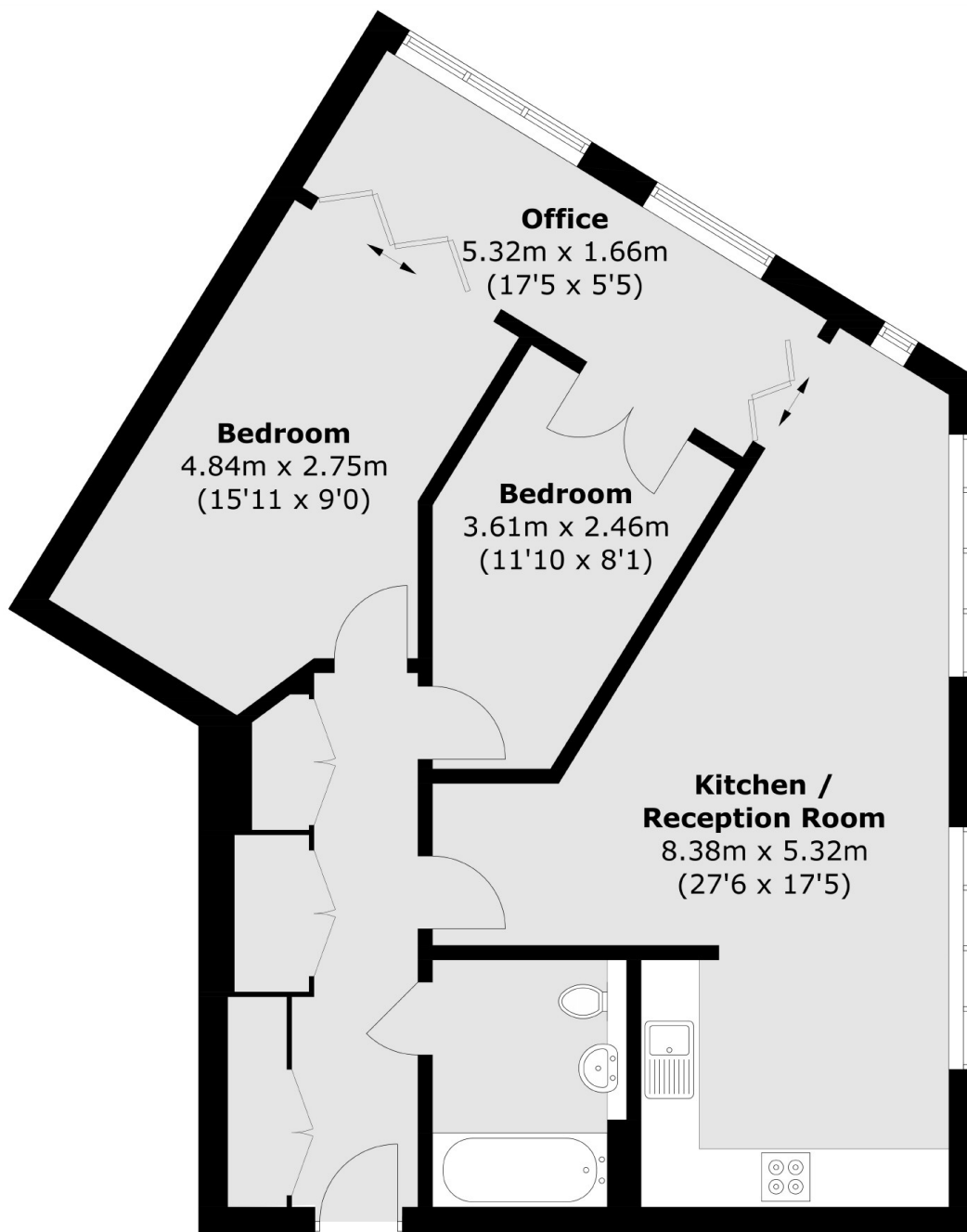
This two-bedroom apartment is located on the second floor and comprises a semi-open plan, fully equipped, contemporary kitchen, living and dining area, two double bedrooms, modern family bathroom and a spacious winter garden. The apartment comes complete with plenty of built-in storage. Aldgate Place benefits from landscaped gardens, 24-hour concierge, a fully equipped resident's gym and secure underground bicycle storage.

Conveniently located within walking distance to the City, Spitalfields Market, Tower Bridge and Shoreditch. Close to an array of shopping, restaurants, bars and entertainment within easy reach. Located near four zone one underground stations (Aldgate, Aldgate East, Tower Hill, Liverpool St.) within walking distance, DLR in Tower Gateway and Liverpool Street and Fenchurch Street Rail all easily accessible.

Features

- 55% Shared Ownership
- Floor to Ceiling Windows
- Resident Gym
- 24-Hour Concierge
- Secure Bicycle Storage
- Fantastic Transport Links

Commercial Road, London, E1



Total area (approx.): 80.1 sq. m (862.2 sq. ft)