



## City Road, EC1V

£575,000

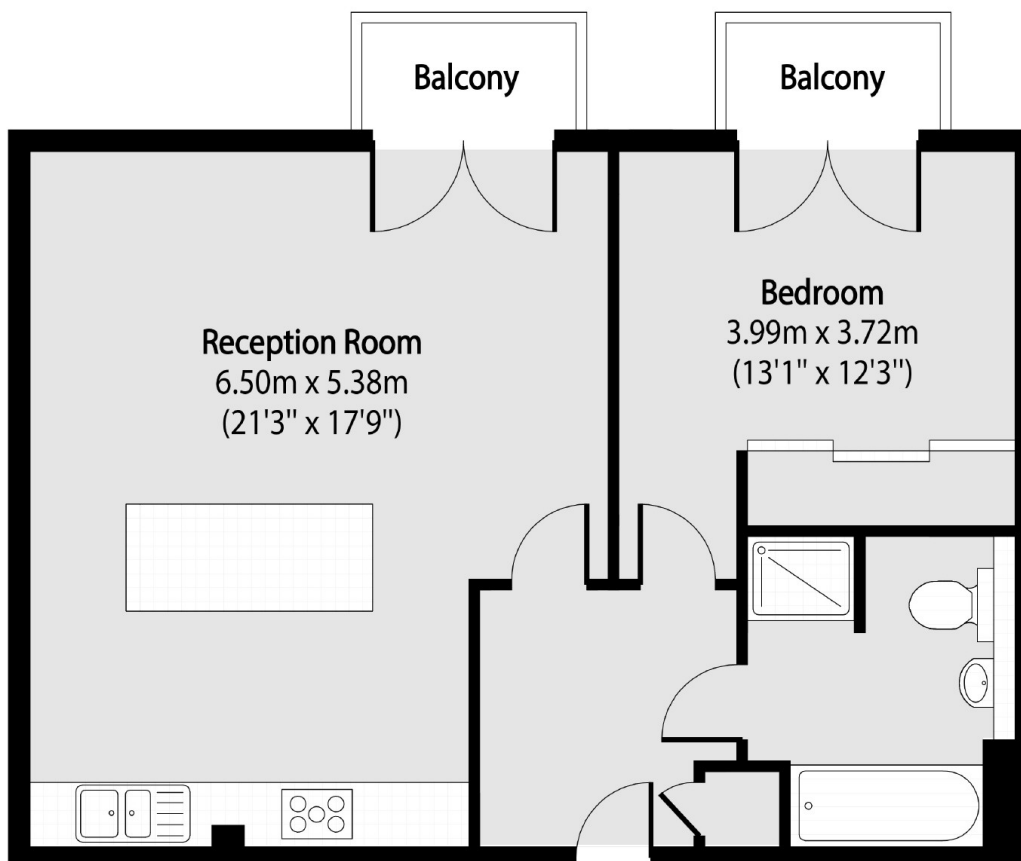
A good sized, top floor, one bedroom apartment. The property is very well presented with a bright open kitchen/living room, large double bedroom and generous family bathroom. The property benefits from high ceilings, lift access, and two private, south facing balconies.

This development is just 0.4 miles from Angel Station benefiting from access to the Northern Line, and the vast array of restaurants, bars and Cafes of Angel and Islington.

### Features

- Balcony Space
- South Facing
- Gated Development
- Wooden Flooring
- Built In Storage
- Open Plan Kitchen

# City Road, London, EC1V



Total area (approx): 60.39 Sq M (650 Sq Ft)

Balcony total area (approx): 4.0 sq m (21 sq. ft)

**Dexters**

Shoreditch  
44 Great Eastern Street  
London  
EC2A 3EP  
Sales  
0207 483 6371

Energy Rating: D. We aim to make our particulars both accurate and reliable. However they are not guaranteed; nor do they form part of an offer or contract. If you require clarification on any points then please contact us, especially if you're traveling some distance to view. Please note that appliances and heating systems have not been tested and therefore no warranties can be given as to their good working order.

 **RICS** | Regulated  
Estate Agent  
and Letting Agent

[dexters.co.uk](http://dexters.co.uk)