



Steward Street, E1

£650,000

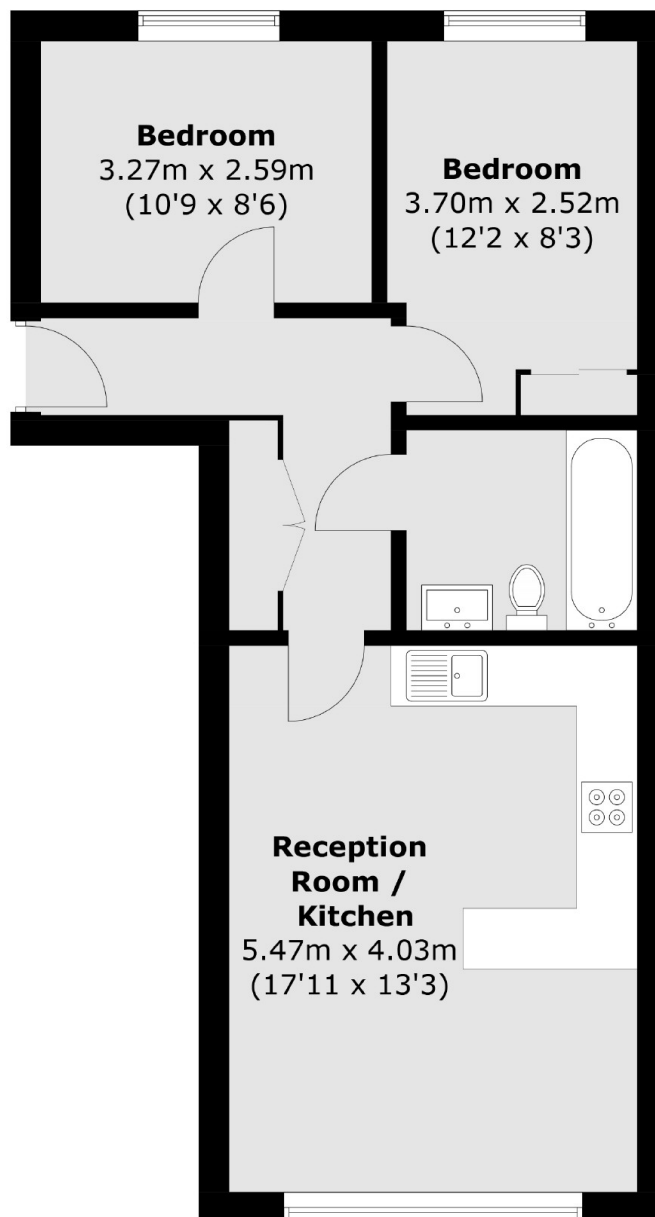
A two double bedroom apartment situated on the second floor of a gated development in the heart of Spitalfields Market. This property offers a large open plan living space, lots of natural light and a stylish modern bathroom.

Steward Street is situated on the doorstep of Spitalfields Market and offers a unique haven from the City surrounded by cobbled streets, cafés and restaurants, just moments from Liverpool Street Station.

Features

- Two Double Bedroom
- Second Floor
- Gated Development
- Doorstep of Spitalfields Market
- Open Plan Kitchen
- Lift Access

Steward Street, London, E1



Second Floor

Total area (approx.): 52.9 sq. m (569.4 sq. ft)