



Avantgarde Place, E1

£599,950

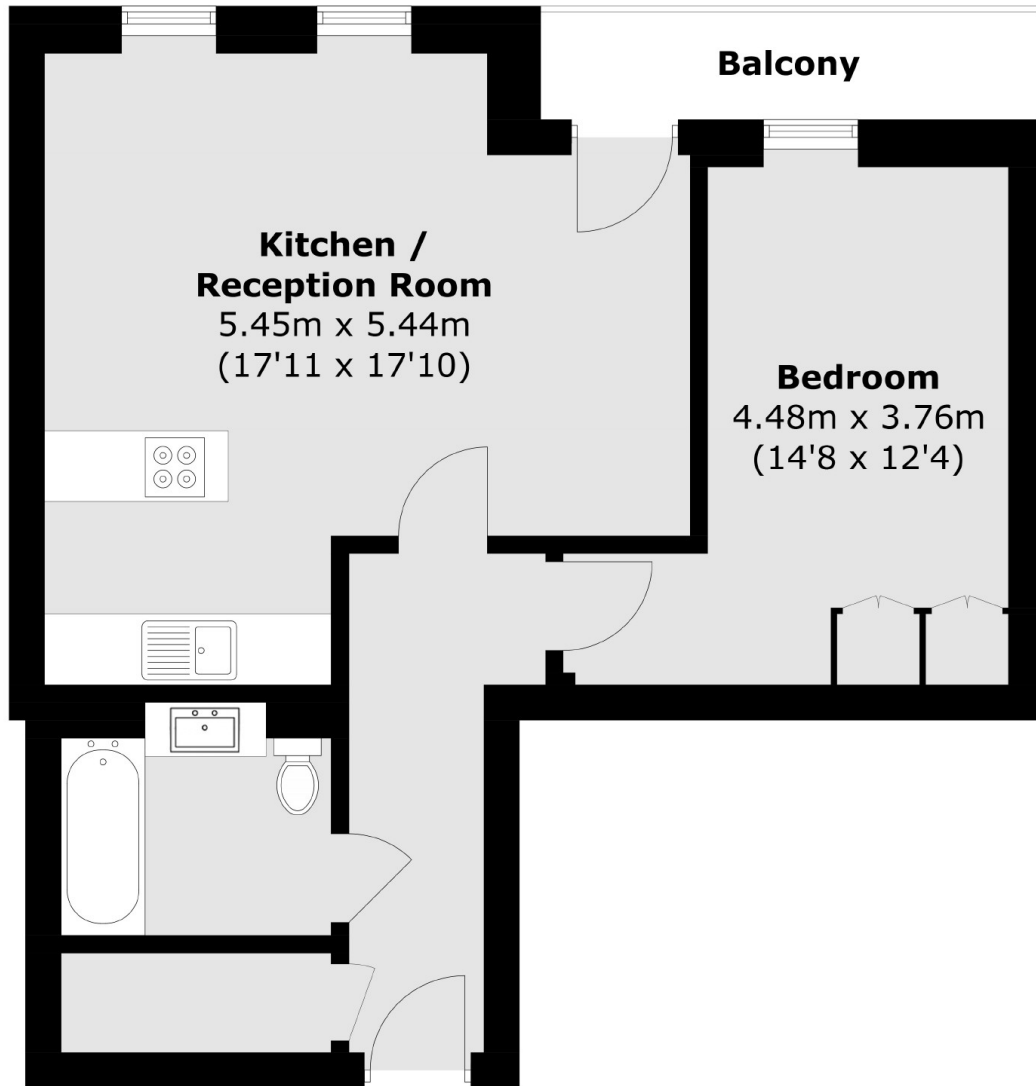
A modern one double-bedroom apartment on the seventeenth floor of this secure building. This property has a well-finished open-plan living room and kitchen with modern appliances, floor-to-ceiling windows, generous built-in storage and air conditioning. The building benefits from a 24-hour concierge, gym, bicycle storage, communal roof terrace and courtyard.

This apartment is located in the centre of Shoreditch with the abundance of eateries, bars and shops on its doorstep. Shoreditch High Street Station and Redchurch Street are both within walking distance. Just over half a mile from Liverpool Street and Old Street stations.

Features

- One Double Bedroom
- Concierge
- Gym
- Communal Roof Terrace
- Open Plan
- Modern

Avantgarde Place, London, E1



Total area (approx.): 51.1 sq. m (550.0 sq. ft)
Balcony area: 3.8 sq. m (40.9 sq. ft)