



Hemming Street, E1

£699,999

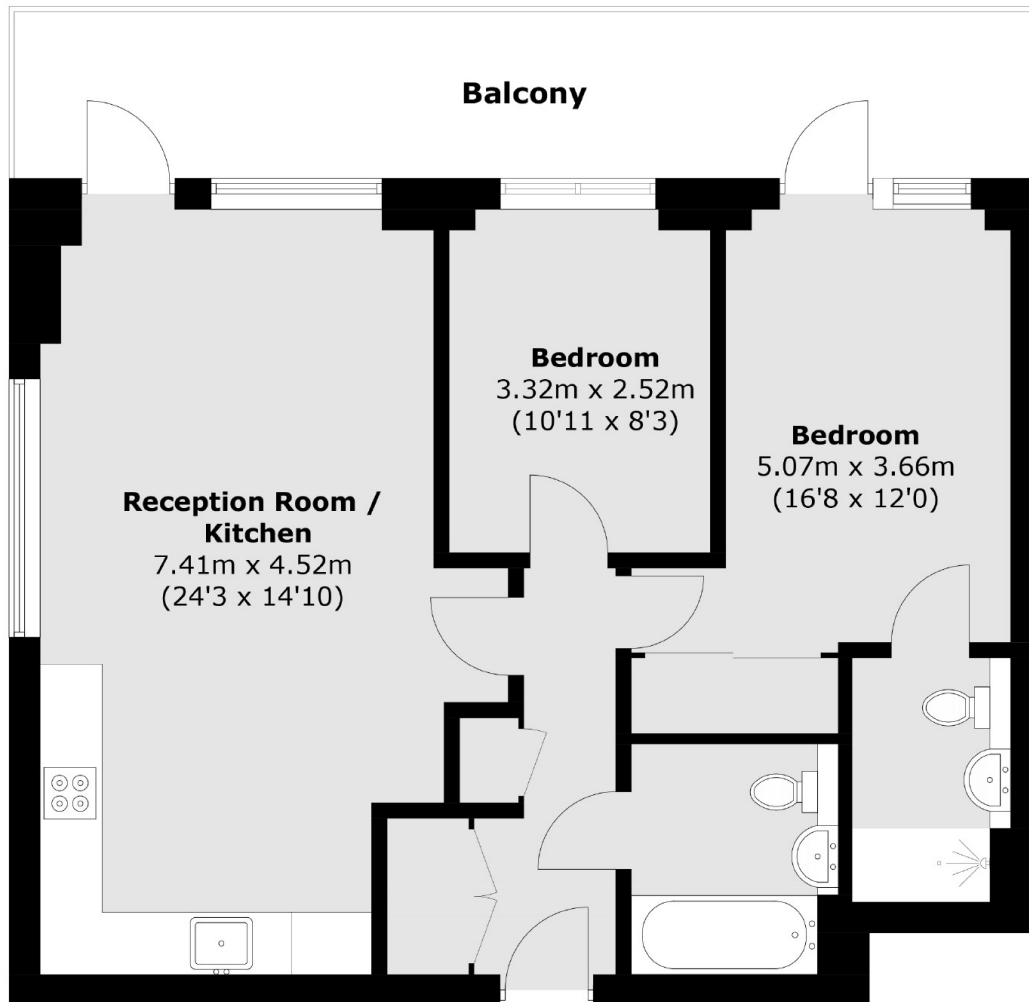
This two double bedroom apartment features dual aspect, open plan kitchen/living area with floor to ceiling windows with views of The City, and a west facing balcony. The principal bedroom features an en-suite shower room and built in storage and also provides access to the balcony. There is a second bedroom, family bathroom, additional storage, and air conditioning.

Vega House is located off Valance road under half a mile from Whitechapel Station on the Elizabeth Line. Brick Lane is a quarter of a mile walk with the vibrant areas of Bethnal Green and Shoreditch High Street half a Mile away.

Features

- Two Bedroom
- Two Bathroom
- Large Balcony
- Open Plan
- Communal Roof Terrace
- Communal Bike Storage

Hemming Street, London, E1



Total area (approx.): 68.5 sq. m (737.3 sq. ft)
Balcony: 15.8 sq. m (170 sq. ft)

Dexters

Shoreditch
44 Great Eastern Street
London
EC2A 3EP
Sales
0207 483 6371

Energy Rating: B. We aim to make our particulars both accurate and reliable. However they are not guaranteed; nor do they form part of an offer or contract. If you require clarification on any points then please contact us, especially if you're traveling some distance to view. Please note that appliances and heating systems have not been tested and therefore no warranties can be given as to their good working order.

 **RICS** | Regulated
Estate Agent
and Letting Agent

[dexters.co.uk](https://www.dexters.co.uk)