

Shaftesbury Street, N1

£1,750 Per calendar month

A one bedroom apartment located on the second floor (with lift) of a secure development. The apartment has a semi open plan kitchen / living area, good size double bedroom, main bathroom and a private balcony. The property is available furnished.

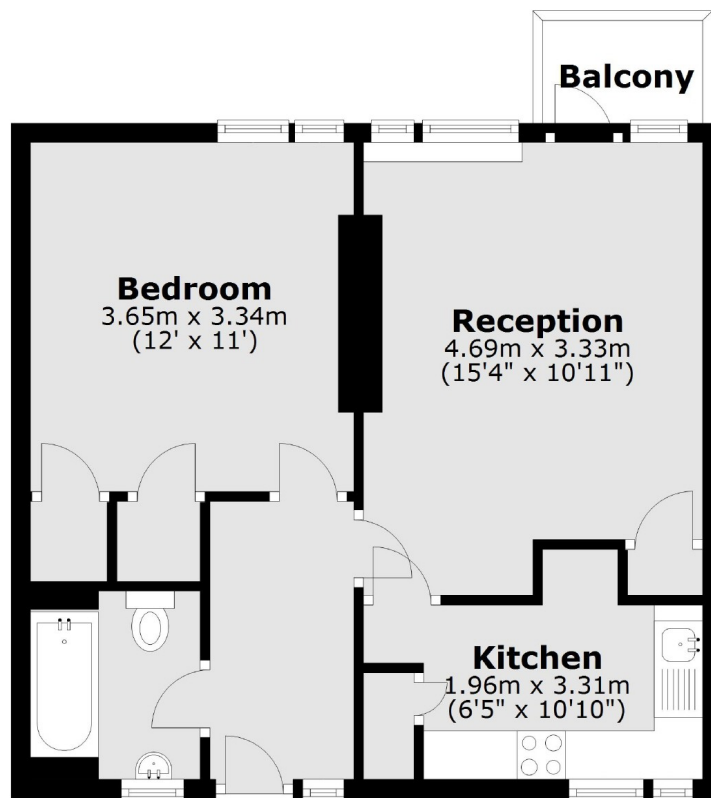
The apartment is located in the heart of Hoxton and is just a short walk to the vibrant Old Street and Shoreditch area's which have numerous trendy bars, cafes and restaurants.

Features

- One Bed
- Good Size
- Furnished
- Great Location
- Secure Block
- Private Balcony

Shaftesbury Street, London, N1

Second Floor



Main area: Approx. 45.9 sq. metres (494.2 sq. feet)
Plus balconies, approx. 2.2 sq. metres (23.2 sq. feet)