



## Hobbs Place Estate, N1

£500,000

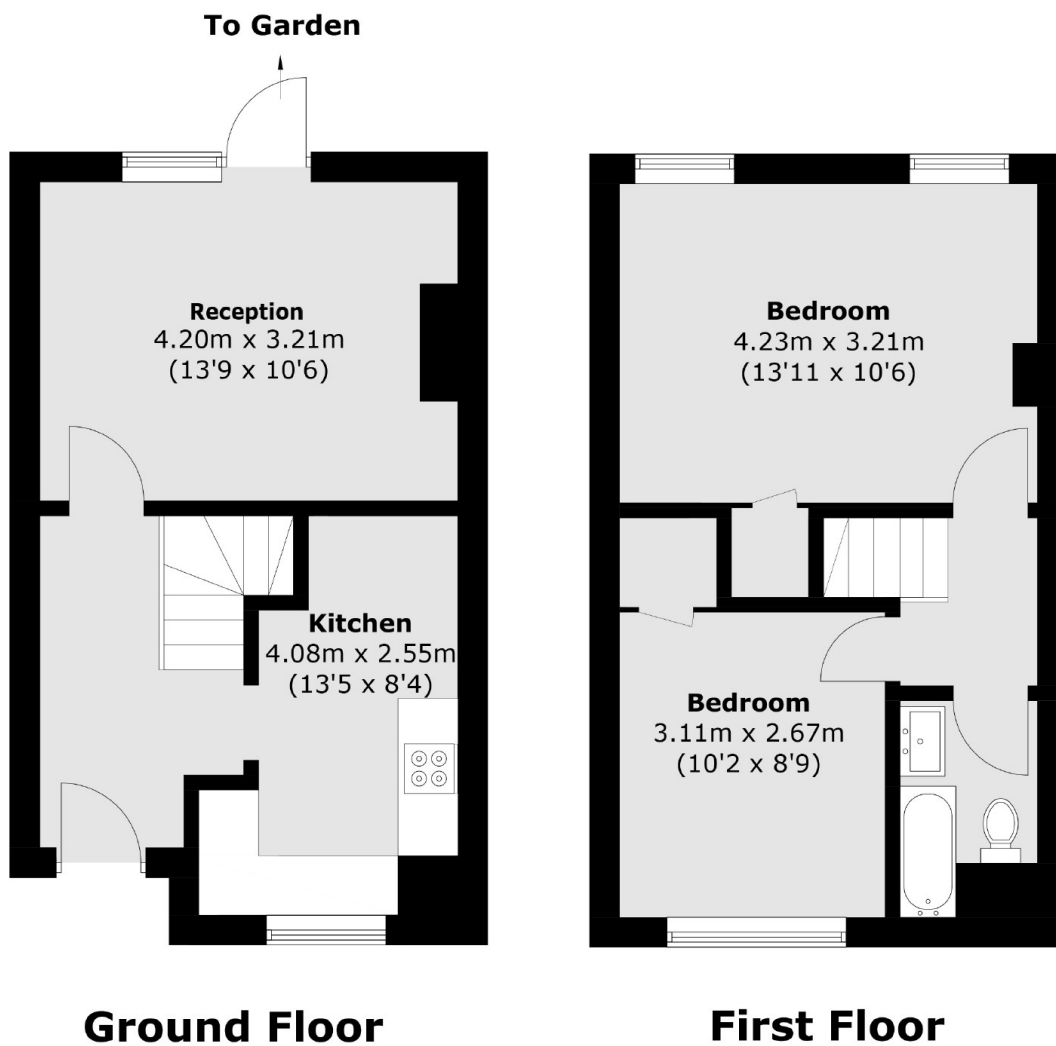
A two bedroom, split level maisonette with front and back garden situated on the ground and first floor. Accommodation comprises of a reception room that leads out to a private back garden, separate kitchen, two double bedrooms, bathroom and built in storage throughout.

Clinger Court is situated for easy access to shops, bars and restaurants of Hoxton, Shoreditch and Dalston. Haggerston Park and Hoxton Street Market are near by and Hoxton Overground and Old Street underground stations are both within walking distance offering many links to the City, Canary Wharf and the West End. There are also frequent bus routes found on Kingsland Road.

### Features

- Two Bedroom
- Maisonette
- Split level
- Front and back garden
- Close to Hoxton
- Local Amenities Nearby

# Hobbs Place Estate, London, N1



Total area (approx.): 61.3 sq. m (659.8 sq. ft)