



New Street, EC2M

£2,500,000

A fantastic two bedroom apartment in the Tapestry building, a unique 18th century warehouse converted into 14 luxury apartments. This flat retains many of the original structural features, complemented by high end modern fittings, and comes with outdoor space.

The apartment provides a spacious open plan reception room, which offers flexible areas for dining, seating, working and entertaining. The bespoke walnut kitchen features a complete set of Gaggenau appliances. There are two generously sized bedrooms with en-suite bathrooms plus an additional guest toilet. The apartment benefits from ash wood floors throughout, separate utility room and guest cloakroom.

Features

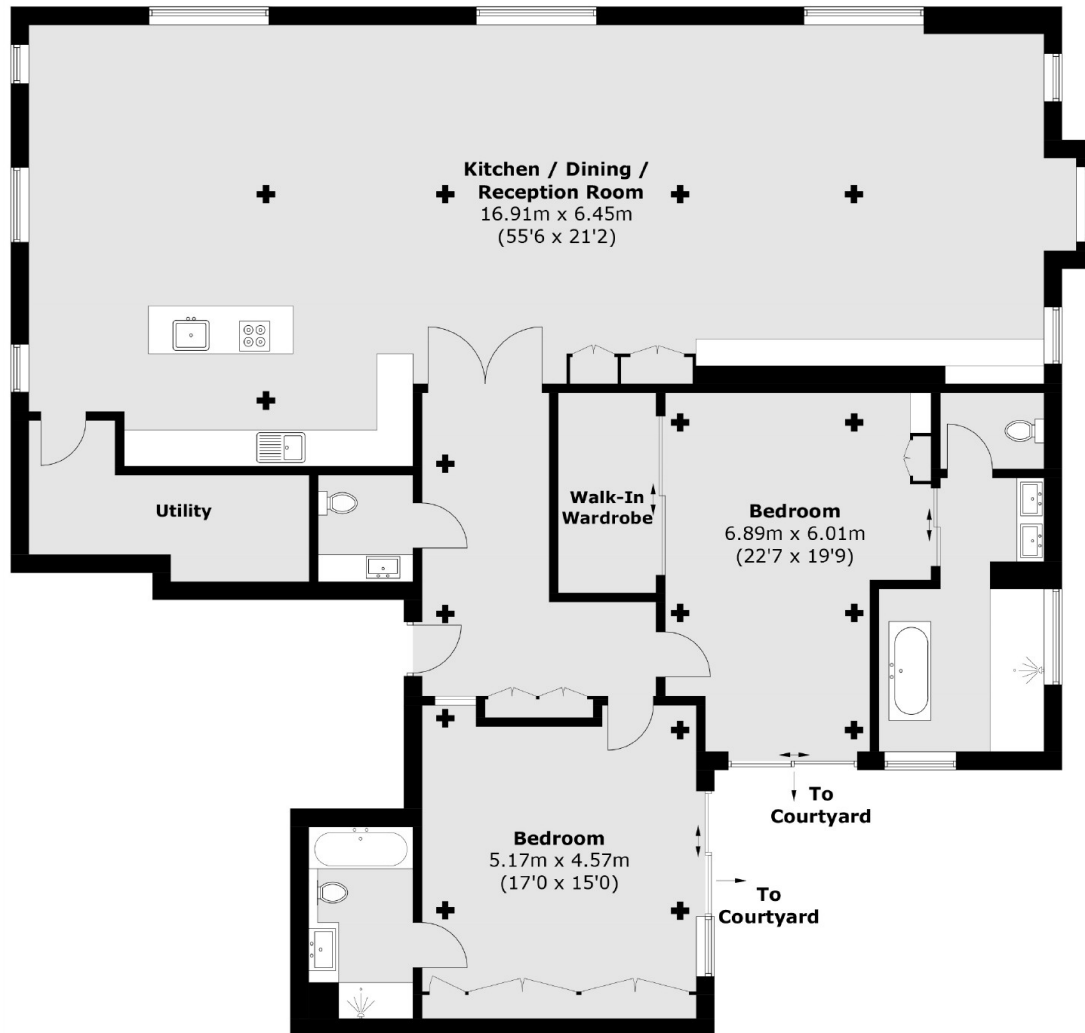
- Warehouse Conversion
- 2,300 sq.ft
- Open Plan
- Private Terrace
- Gated Development
- Original Features



New Street, EC2M



New Street, London, EC2M



Total area (approx.): 213.4 sq. m (2,297.0 sq. ft)