



## Bethnal Green Road, E2

£2,600 Per calendar month

A two double bedroom flat with one bathroom and a semi open plan living kitchen area located on the third floor of a converted biscuit factory. There is a concierge and a communal roof terrace. The property is furnished.

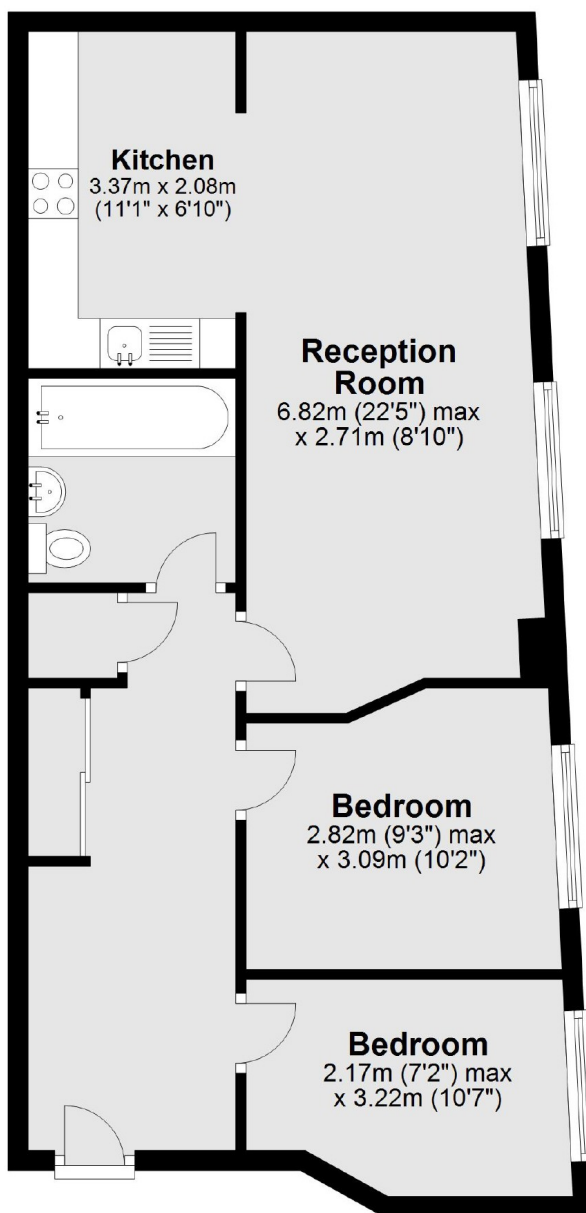
City View House is very well located for easy access to the Central Line at Bethnal Green which is only 0.1 miles away.

### Features

- Two Double Bedrooms
- One Bathroom
- Third Floor
- Concierge
- Roof Terrace
- Furnished

# Bethnal Green Road, London, E2

## Third Floor



Total area: approx. 58.8 sq. metres (633.0 sq. feet)