



Branch Place, N1

£2,383 Per calendar month

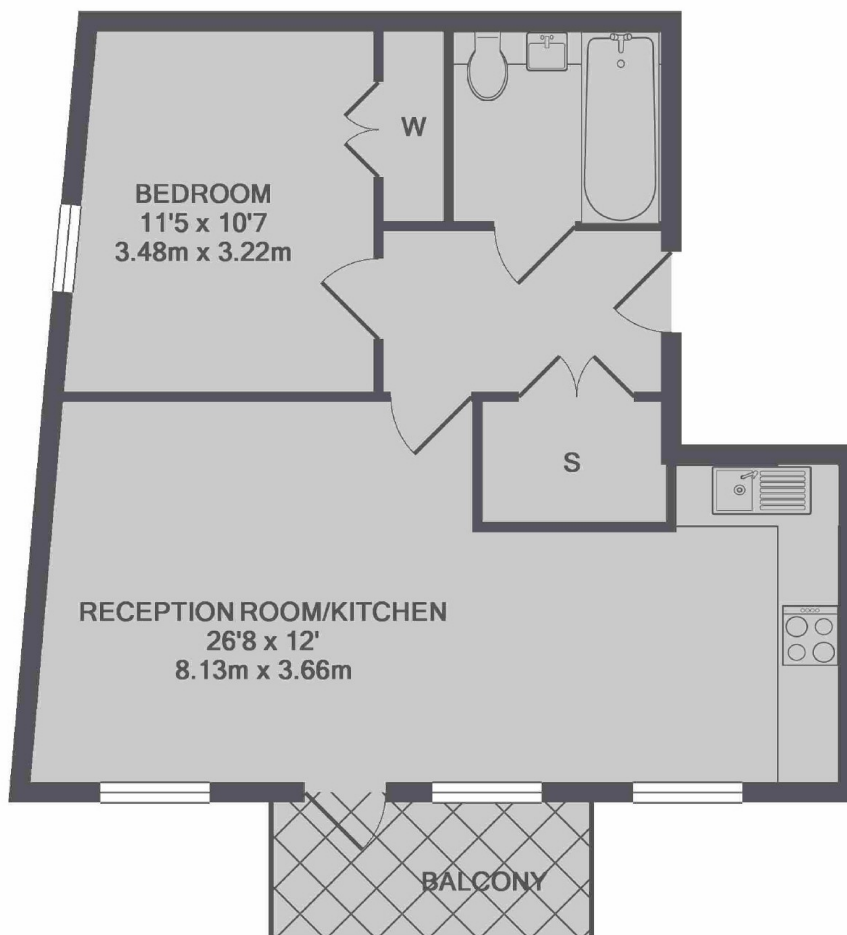
A modern one bedroom top floor apartment located in this highly sought after development which sits on Regent's Canal. The property has open plan living space with a modern kitchen, bathroom and French doors opening onto a private balcony.

Macclesfield Apartments is well located for access to Old Street underground as well as good links to Liverpool Street and Shoreditch. The area has a great choice of bars, clubs and restaurants.

Features

- One Bedroom
- Top Floor
- Open Plan Living
- Modern
- Private Balcony
- Furnished

Branch Place, London, N1



TOTAL APPROX. FLOOR AREA 555 SQ.FT. (51.6 SQ.M.)