



Old Ford Road, E2

£3,200 Per calendar month

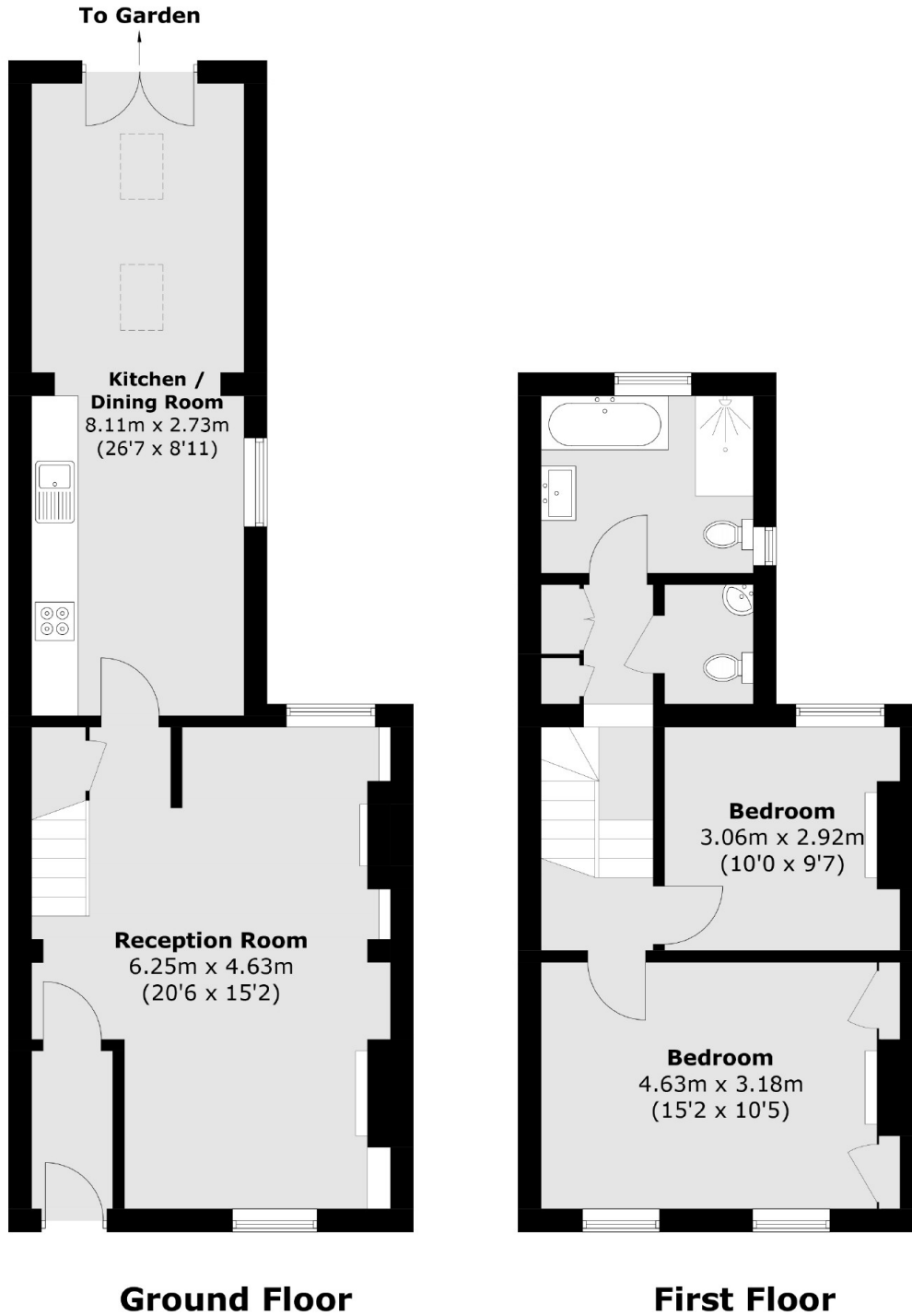
A charming two double bedroom period house boasting period features throughout. This property has a spacious living room with wood flooring and a log burner. A large kitchen diner leads on to an elegant private garden. Upstairs the property benefits from two double bedrooms, a spacious bathroom and a separate.

Old Ford Road is within easy reach of Bethnal Green tube station. Victoria Park and the Village is within a short walk offering ample choice of cafe's, shops, bars, restaurants and pubs. Regents Canal is also at your doorstep for those who wish to explore further.

Features

- Two Bedroom House
- Period Features
- Private Garden
- Seperate WC
- Wood Floors
- Close to Victoria Park

Old Ford Road, London, E2



Total area (approx.): 93.3 sq. m (1,004.2 sq. ft)