



Chilton Street, E2

£525,000

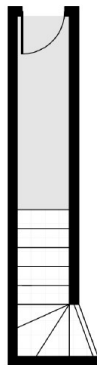
A split level, freehold, two bedroom apartment located in Bethnal Green. The apartment has two bedrooms, a separate kitchen, a main bathroom and living area. Close to Brick Lane and a short walk to the City.

The apartment is located on the Shoreditch and Bethnal Green borders with great access to Shoreditch High Street station and the City.

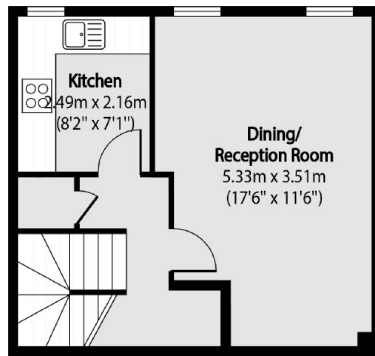
Features

- Split Level
- Two Bedrooms
- Freehold
- Separate Kitchen
- Brick Lane
- Short walk to the City

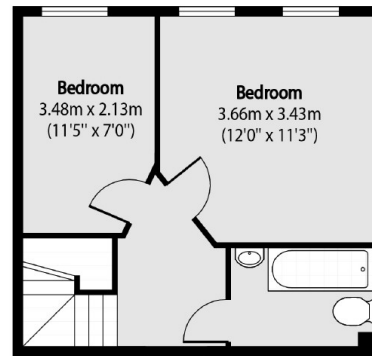
Chilton Street, London, E2



Ground Floor



First Floor



Second Floor

Total area (approx): 65.22 sq m (702 sq. ft)